

HEADERS FOR PLUGGABLE TERM. BLOCK



BC5EHD*, BC5EEHD* SERIES. 5.00 mm (0.197") pitch. PCB Type.

General Features

- Available in 2 through 24 circuits
- Mates with 5.00 mm. pitch pluggable plugs term. blocks
- Top and side entry type. Full polarised
- Meet IEC 61984 and UL 1059 requirements and are approved by UL and VDE

Materials

- Insulator: PA66 UL 94 V-0
- Contact: Electrolytic cooper tin plated
- Operating temperature: -40°C to +105°C
- RoHS compliant

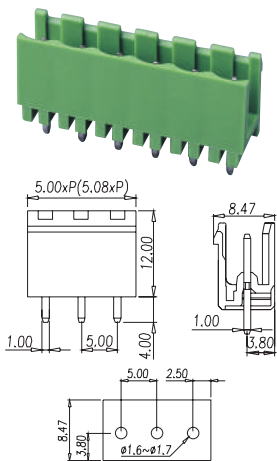
Dimension Information

Electrical Features

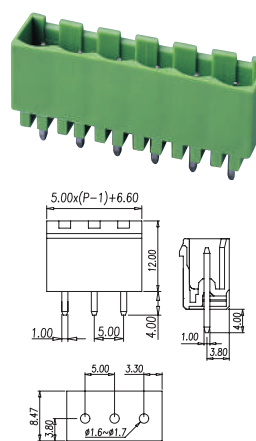
- Voltage rating: 300V UL / 600V IEC
- Rated current: 15 A UL / 18 A IEC
- Contact resistance: < 20 mΩ
- Rated surge voltage: 1600V UL / 4000V IEC
- Insulation resistance: >500 MΩ

Mechanical features

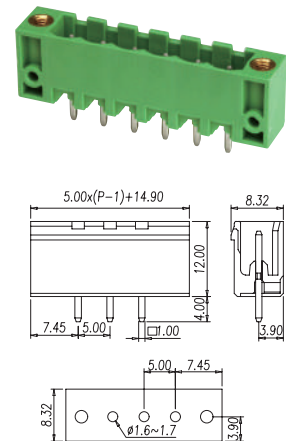
- Durability: 25 cycles



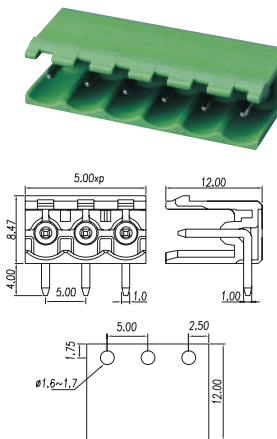
P/N: **BC5EHDV-XX-P**
XX= N° CONTACTS



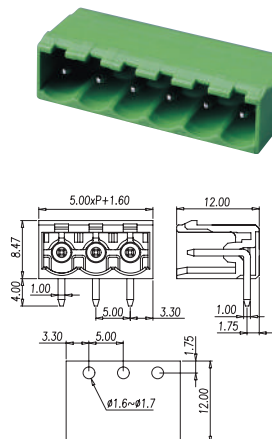
P/N: **BC5EHDVC-XX-P**
XX= N° CONTACTS



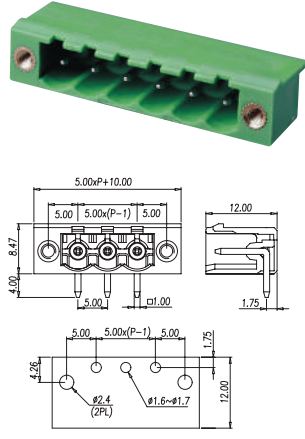
P/N: **BC5EHDVM-XX-P**
XX= N° CONTACTS



P/N: **BC5EHDR-XX-P**
XX= N° CONTACTS



P/N: **BC5EHDRC-XX-P**
XX= N° CONTACTS

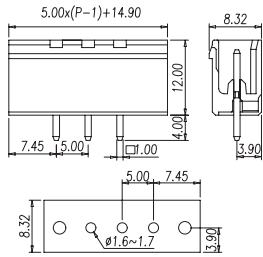
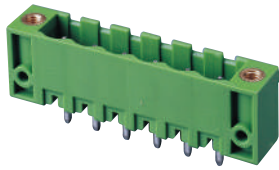


P/N: **BC2EHDVM-XX-P**
XX= N° CONTACTS

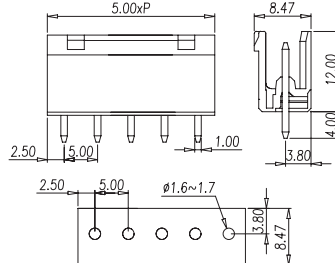
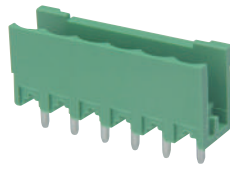
HEADERS FOR PLUGGABLE TERM. BLOCK



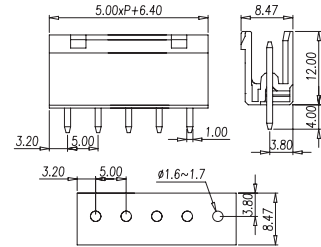
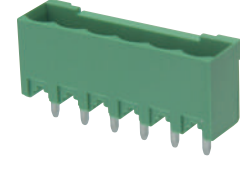
BC5EHD*, BC5EEHD* SERIES. 5.00 mm (0.197") pitch. PCB Type.



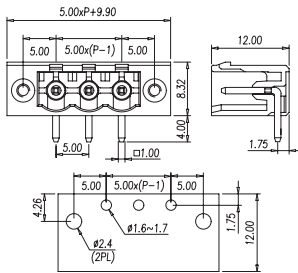
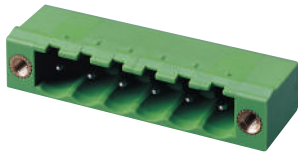
P/N: **BC5EHDVM-XX-PEVER**
XX= N° CONTACTS



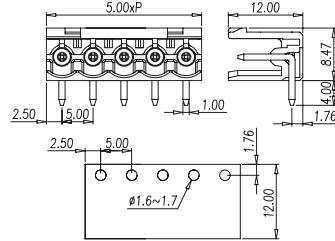
P/N: **BC5EHDNV-XX-P**
XX= N° CONTACTS



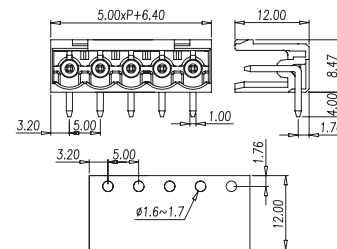
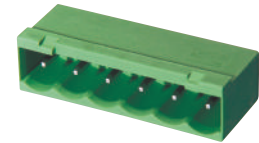
P/N: **BC5EHDNVC-XX-P**
XX= N° CONTACTS



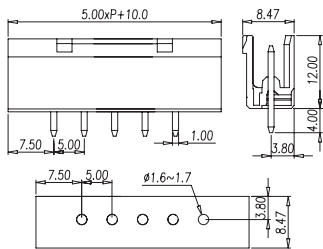
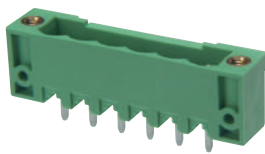
P/N: **BC5EHDRM-XX-PEVER**
XX= N° CONTACTS



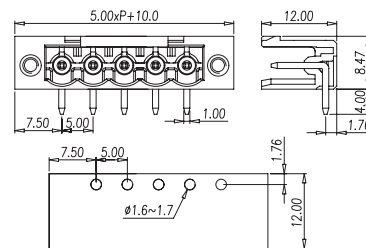
P/N: **BC5EHDNR-XX-P**
XX= N° CONTACTS



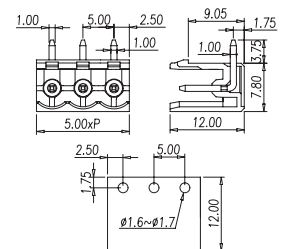
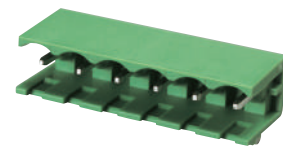
P/N: **BC5EHDNRC-XX-P**
XX= N° CONTACTS



P/N: **BC5EHDNVM-XX-P**
XX= N° CONTACTS



P/N: **BC5EHDNRM-XX-P**
XX= N° CONTACTS



P/N: **BC5EHDRR-XX-P**
XX= N° CONTACTS

