

PLUG FOR PLUGGABLE TER. BLOCK SPRING



BC2ESD*, BC2ESR*, BCSC * SERIES. 5.08 mm (0.200"). For wire spring Type

General Features

- Available in 2 through 24 circuits
- Mates with 5.08 mm. pitch headers (Socket) pluggable terminal blocks
- Front or side wire entry. Full polarised
- Meet IEC60947-7-4 and UL 1059 requirements and are approved by UL and VDE

Materials

- Insulator: PA66 UL 94 V-0
- Contact: Phosphor bronze tin plated
- Spring: High-strength steel alloys zinc plated
- Operating temperature: -40°C to +105°C
- RoHS compliant

Dimension Information

Electrical Features

- Voltage rating: 300 V UL; 250 V IEC;
- Rated current: 10 A UL / 12 A IEC
- Contact resistance: < 20 mΩ
- Rated surge voltage: 1600V UL / 4000 V IEC
- Insulation resistance: >500 MΩ

Mechanical features

- Wire strip length: 11.00 to 12.00 mm. (BC2ESDSR 8.00 to 9.00 mm)
- Conductor cross-section: AWG 24 -12 (Series BC5ESDS and BC2ESR AWG 26-12)
- Durability: 25 cycles

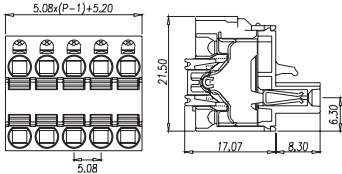
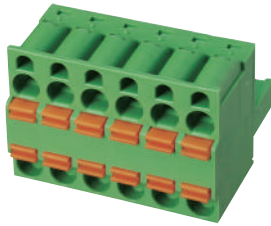
<p>P/N: BC2ESDSR-XX-P XX= N° CONTACTS</p>	<p>P/N: BC2ESDS-XX-P XX= N° CONTACTS</p>	<p>*12 A UL and AWG 24-12 P/N: BC2ESDB-XX-P XX= N° CONTACTS</p>
--	---	--

<p>P/N: BC2ESDSRM-XX-P XX= N° CONTACTS</p>	<p>P/N: BC2ESDSM-XX-P XX= N° CONTACTS</p>	<p>*12 A UL and AWG 24-12 P/N: BC2ESDBM-XX-P XX= N° CONTACTS</p>
---	--	---

PLUG FOR PLUGGABLE TER. BLOCK SPRING



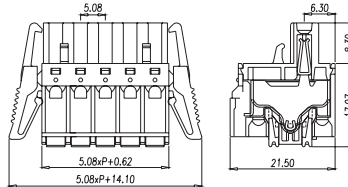
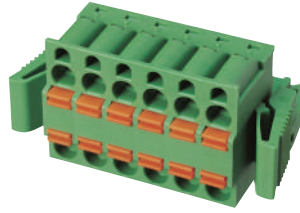
BC2ESD*, BC2ESR*, BCSC * SERIES. 5.08 mm (0.200"). For wire spring Type



*12 A UL and AWG 24-12

P/N: **BC2ESDBA-XX-P**

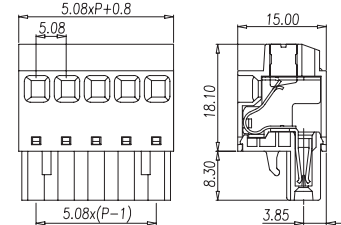
XX= N° CONTACTS



*12 A UL and AWG 24-12

P/N: **BC2ESDBAT-XX-P**

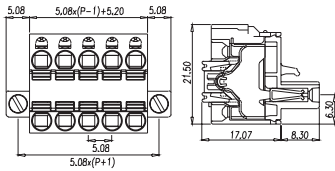
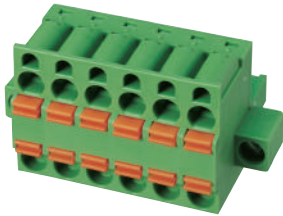
XX= N° CONTACTS



*18 A IEC and 600V IEC

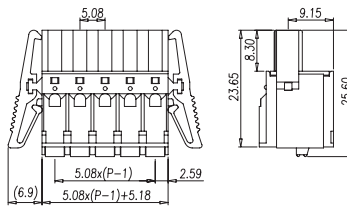
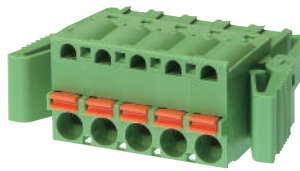
P/N: **BC2ESR-XX-P**

XX= N° CONTACTS



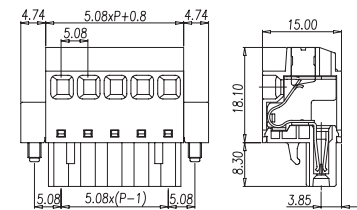
P/N: **BC2ESDBAM-XX-P**

XX= N° CONTACTS



P/N: **BC2ESDST-XX-P**

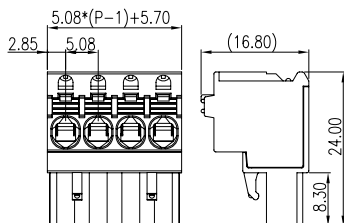
XX= N° CONTACTS



*18 A IEC and 600V IEC

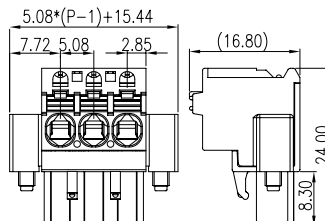
P/N: **BC2ESRM-XX-P**

XX= N° CONTACTS



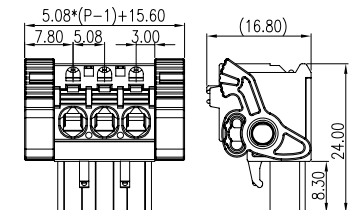
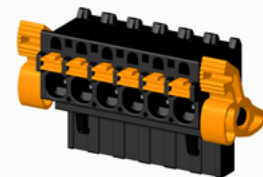
P/N: **BC2ESDSV-XX-P**

XX= N° CONTACTS



P/N: **BC2ESDVM-XX-P**

XX= N° CONTACTS



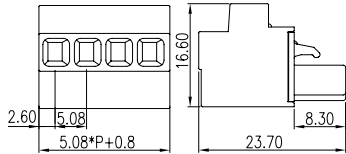
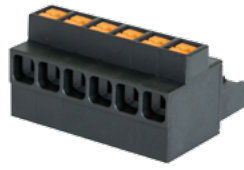
P/N: **BC2ESDSVK-XX-P**

XX= N° CONTACTS

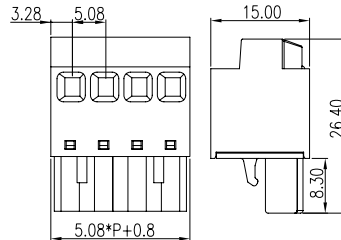
PLUG FOR PLUGGABLE TER. BLOCK SPRING



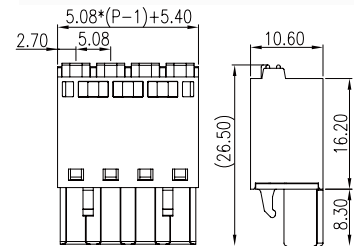
BC2ESD*, BC2ESR*, BCSC * SERIES. 5.08 mm (0.200"). For wire spring Type



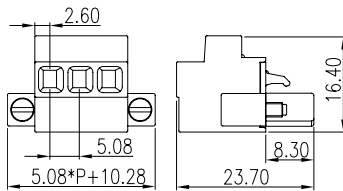
P/N: **BC2ESV-XX-P**
XX= N° CONTACTS



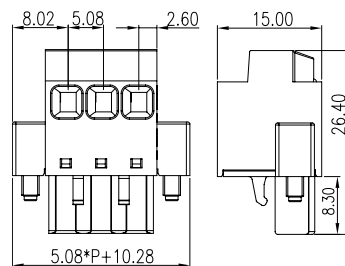
P/N: **BC2ESR-XX-P**
XX= N° CONTACTS



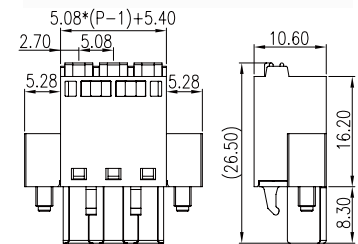
P/N: **BC2ESS-XX-P**
XX= N° CONTACTS



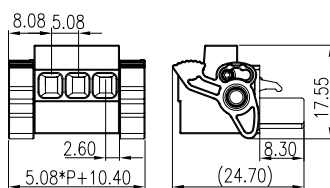
P/N: **BC2ESVM-XX-P**
XX= N° CONTACTS



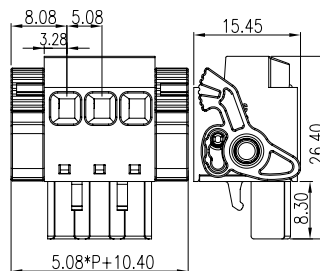
P/N: **BC2ESRM-XX-P**
XX= N° CONTACTS



P/N: **BC2ESSM-XX-P**
XX= N° CONTACTS



P/N: **BC2ESVK-XX-P**
XX= N° CONTACTS

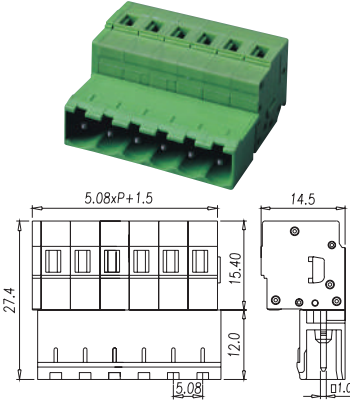
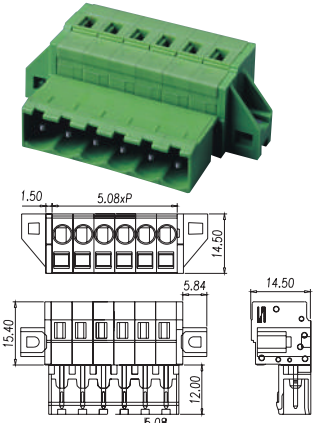
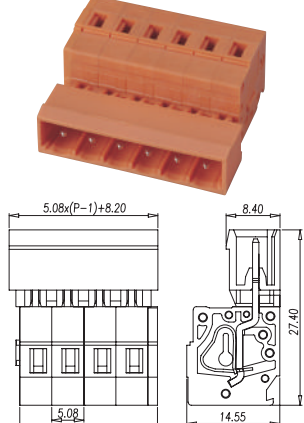


P/N: **BC2ESRK-XX-P**
XX= N° CONTACTS

PLUG FOR PLUGGABLE TER. BLOCK SPRING



BC2ESD*, BC2ESR*, BCSC * SERIES. 5.08 mm (0.200"). For wire spring Type

 <p>*15 A UL and AWG 28-14 P/N: BCSC508EH-XX-P XX= N° CONTACTS</p>	 <p>*15 A UL and AWG 28-14 P/N: BCSC508EHM-XX-P XX= N° CONTACTS</p>	 <p>*15 A UL and AWG 28-14 P/N: BCSC508W8-XX-P XX= N° CONTACTS</p>