

# TWIN PLUG PLUGGABLE DOUBLE PUSH-IN



## BC0181A\* SERIES. 3.50 mm. (0.138") pitch. Double push-in connection.

### General Features

- Available in 2 through 24 circuits
- Mates with 3.50 mm. pitch sockets pluggable terminal Blocks BCECH350 Series
- Full polarised.
- Meet UL requirements

### Materials

- Insulator: PA66 UL 94 V-0
- Contact: Bronze tin plated
- Operating temperature: -40°C to +115°C
- RoHS compliant

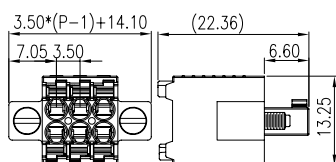
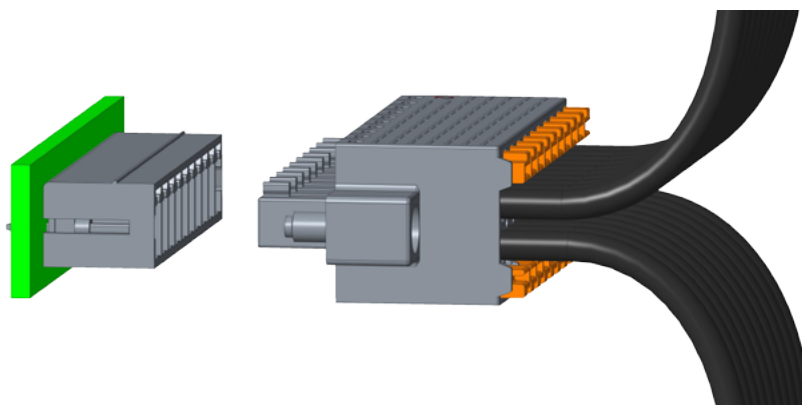
### Dimension Information

### Electrical Features

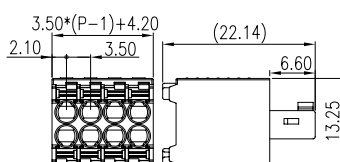
- Voltage rating: 300V UL; 320V IEC;
- Rated current: 8 A UL / 8 A IEC
- Contact resistance: < 20 mΩ
- Rated surge voltage: 2500 V
- Insulation resistance: >500 MΩ

### Mechanical features

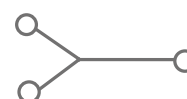
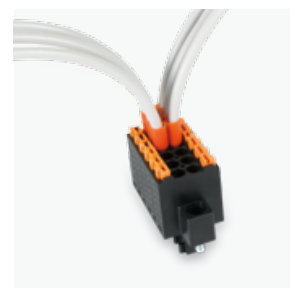
- Wire strip length: 10 mm.
- Conductor cross section: AWG 24-16
- Durability: 25 cycles



Código: **BC0181A1-XX**  
XX= Nº CONTACTOS



Código: **BC0181A3-XX**  
XX= Nº CONTACTOS



Circuit diagram