

DUAL ROW SMT VERTICAL SOCKET



8367 SERIES. 1.27 x 1.27 mm. (0.050 x 0.050") pitch. Machined contact.

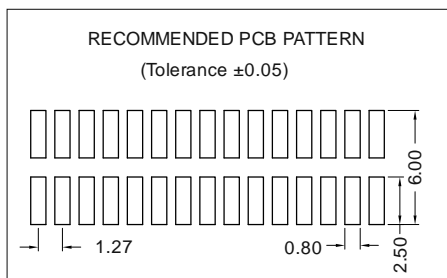
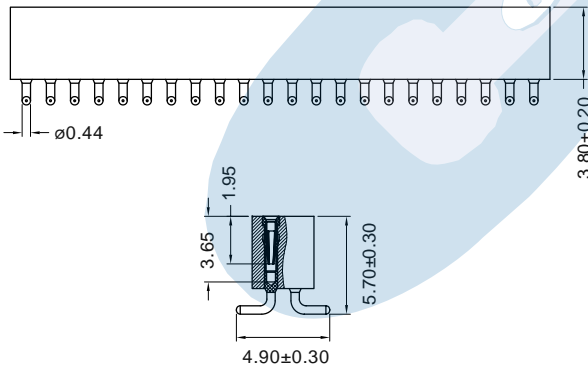
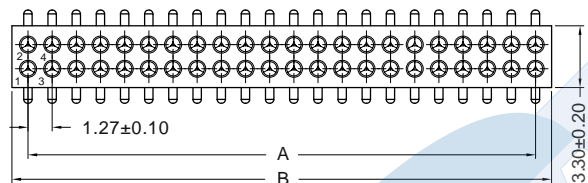
General Features

- Available in 4 through 80 circuits
- Mates with Pin headers 1.27mm. pitch 8351, 8354 and 8357 series
- Accept round pin 0.38 to 0.50 mm.
- Low profile 5.15 mm. high

Materials

- Insulator: PPS black + 30% GF UL 94 V-0
- Contact: Clip (3 fingers) in Beryllium copper
- Sleeve: Brass
- Operating temperature: -40°C to +105°C
- RoHS compliant

Dimension Information



DIMENSIONS:

$$A = 1.27 \left(\frac{XX}{2} - 1 \right) \quad B = 1.27 \left(\frac{XX}{2} \right) + 0.41$$

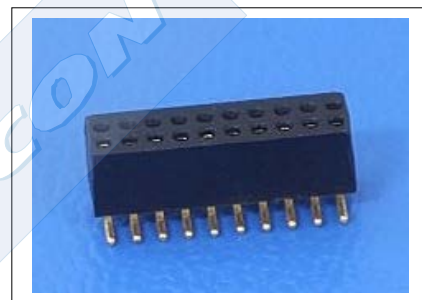
XX = Number of circuits

Electrical Features

- Voltage rating: < 100V
- Current rating: < 1 A
- Contact resistance: < 10 mΩ
- Dielectric withstanding Voltage: 1000 V AC/minute
- Insulation resistance: >1000 MΩ

Mechanical Features

- Insertion force per pin: < 0.25 Kgf (round pin 0.41 mm)
- Withdrawal force per pin: > 0.03 Kgf (round pin 0.41 mm)
- Durability: 500 Cycles



Ordering Information:

8367 - T- XX- E

1 2 3 4

1. Connector Series

2. (T) Contact Plating

- T = 13. Selec. gold flash over 30-50 μ m Ni overall
Recommended Finish
- T = 15. 15 μ m selec. gold over 30-50 μ m Ni overall
- T = 16. 30 μ m selec. gold over 30-50 μ m Ni overall

3. (XX) Number of circuits

- Available in 4 through 80 circuits

4. E = Packing Options

- E = 1. Tube + Pad
- E = 2. Reel + Pad