

MINI DIN R/ ANGLE PCB DUAL PORT SOCKET



7009 SERIES. Mini DIN R/ A. dual port socket connector.

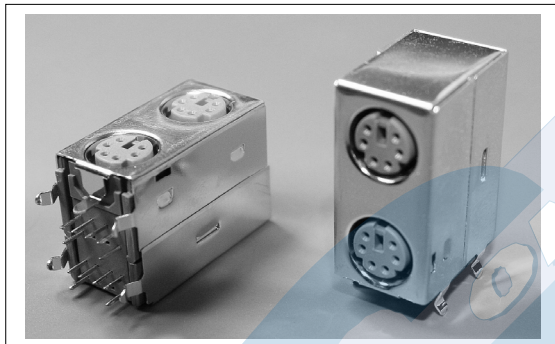
General Features

- Available in 6+6 circuits (Standard colour violet-blue)
- Optional colour black-black: Part Number: **7009-3061B**
- Contact area: selective silver plating over Ni.
- Solder area: tin plating over nickel
- Dual port. With shielding

Materials

- Insulator: PBT GF UL94V-0
- Contact: Phosphor bronze $t = 0.20$ mm gold plating
- Metal shell : Brass $t = 0.30$ mm nickel plated
- Boardlock: Brass $t = 0.30$ mm nickel plated
- Operating temperature: -25°C to $+85^{\circ}\text{C}$. RoHS compliant

Dimensions



Electrical Features

- Voltage rating 100 V
- Current rating: $< 1\text{A}$
- Contact resistance: $< 30\text{ m}\Omega$
- Dielectric withstanding voltage: 500 V AC/minute
- Insulation resistance: $> 100\text{ M}\Omega$

Mechanical Features

- Insertion force: $< 4.00\text{ Kg}$
- Extraction force: $> 0.90\text{ Kg}$
- Durability: 500 cycles

7009 - T- 06- 1

1 2

1. Serie

2. (T) Contact Plating

- T = 3. Gold flash over Ni.
RECOMMENDED FINISH

*OPTIONAL: **7009-T061B**
(Colour of connectors Black-Black)

