

SIDE ENTRY MULTI PORT PCB JACK FCC-68



6821 SERIES. Right angle PCB jack. Plastic Peg.

General Features

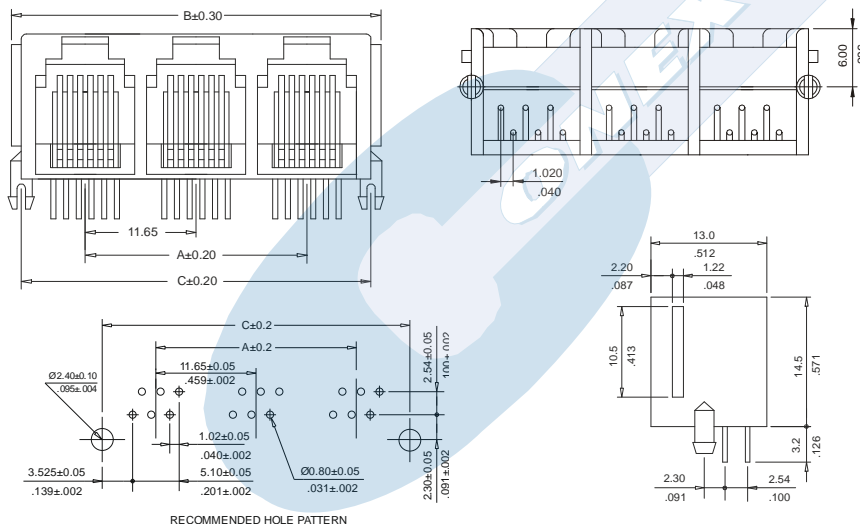
- Available in 6/2, 6/4 and 6/6 and 8/8 circuits
- Standard telephone jack FCC-68
- 14.50 mm. height
- Accept standard plugs FCC-68
- Full gold plating with different plating
- Bifurcated plastic foot print
- Stackable side to side

Materials

- Insulator: Thermoplastic UL 94V-0
- Contact: 0.46 mm round in phosphor bronze
- Operating temperature. -25°C to + 85°C
- RoHS compliant

Dimensional Information

Type 6/6



T = Plating Options

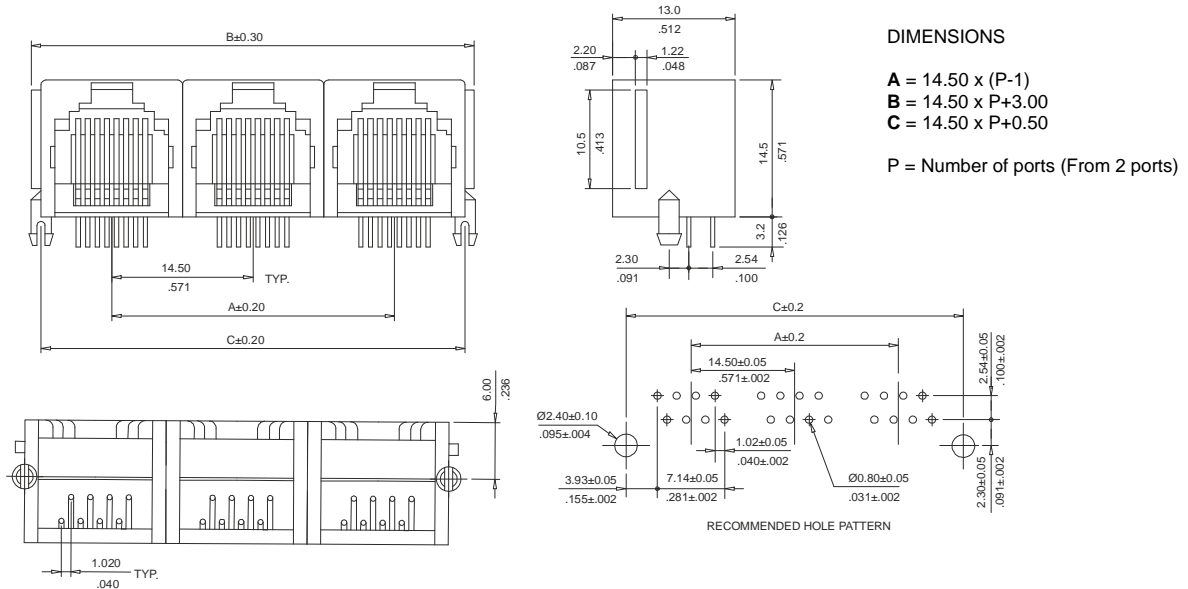
- T = 4. 10 μ " gold over nickel
- T = 5. 15 μ " gold over nickel
- T = 6. 30 μ " gold over nickel
- T = 7. 50 μ " gold over nickel

DIMENSIONS

A = 11.65 x (P-1)
B = 11.65 x P+2.50
C = 11.65 x P+0.50

P = Number of ports (From 2 ports)

Type 8/8



DIMENSIONS

A = 14.50 x (P-1)
B = 14.50 x P+3.00
C = 14.50 x P+0.50

P = Number of ports (From 2 ports)