

SIDE ENTRY MULTI PORT PCB JACK FCC-68



6820 SERIES. Right angle PCB jack. Metallic Foot print.

General Features

- Available in 6/2, 6/4, 6/6 and 8/8 circuits
- Standard telephone jack FCC-68
- 15.40 mm. height
- Accept standard plugs FCC-68
- Full gold plating with different plating
- Metallic foot print

Materials

- Insulator: Thermoplastic UL 94V-0
- Contact: 0.45 mm round in phosphor bronze
- Operating temperature. -25°C to + 85°C
- RoHS compliant

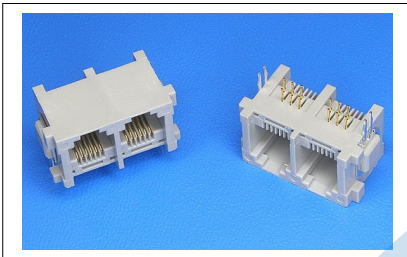
Electrical Features

- Voltage rating: < 125V
- Current rating: < 1.50 A
- Contact resistance: < 20 mΩ
- Dielectric withstanding voltage: 300 V AC/minute
- Insulation resistance: >1000 MΩ

Mechanical Features

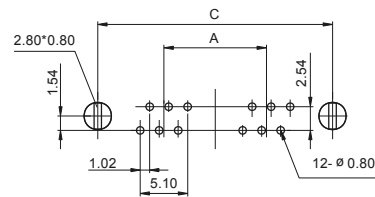
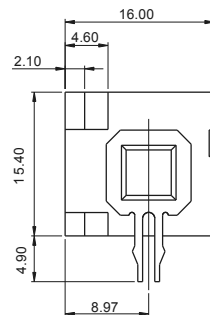
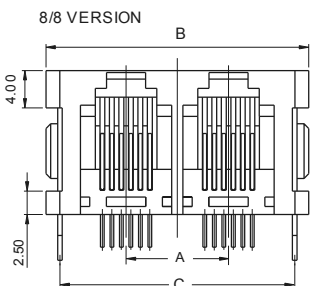
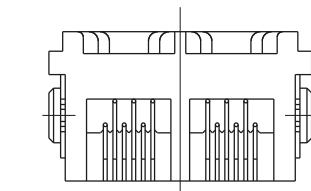
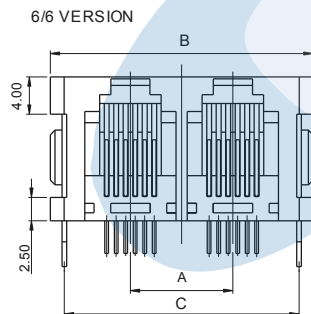
- Durability: 1000 cycles

Dimensional Information

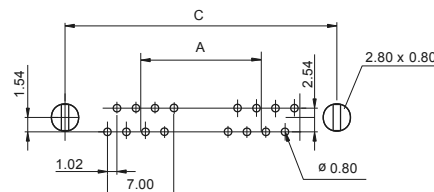


Ports	6/2 Version	6/4 Version	6/6 Version	Dimensions		
				A	B	C
2	6820 – T202	6820 – T402	6820 – T602	11.00 (0.433)	28.20 (1.110)	25.20 (0.992)
3	6820 – T203	6820 – T403	6820 – T603	22.00 (0.866)	39.20 (1.543)	36.20 (1.425)
4	6820 – T204	6820 – T404	6820 – T604	33.00 (1.299)	50.20 (1.976)	47.20 (1.860)
5	6820 – T205	6820 – T405	6820 – T605	44.00 (1.732)	61.20 (2.410)	58.20 (2.290)
6	6820 – T206	6820 – T406	6820 – T606	55.00 (2.165)	72.20 (2.842)	69.20 (2.724)
7	6820 – T207	6820 – T407	6820 – T607	66.00 (2.598)	83.20 (3.275)	80.20 (3.157)
8	6820 – T208	6820 – T408	6820 – T608	77.00 (3.030)	94.20 (3.710)	91.20 (3.590)

Ports	8/8 Version	Dimensions		
		A	B	C
1	6820 – T801	-	19.28 (0.759)	15.80 (0.622)
2	6820 – T802	13.00 (0.512)	32.28 (1.271)	28.80 (1.134)
3	6820 – T803	26.00 (1.024)	45.28 (1.783)	41.80 (1.646)
4	6820 – T804	39.00 (1.535)	58.28 (2.294)	54.80 (2.157)



RECOMMENDED HOLE PATTERN



RECOMMENDED HOLE PATTERN

T = Plating Options

- T = 4. 6μ" gold over nickel
- T = 5. 15μ" gold over nickel
- T = 6. 30μ" gold over nickel
- T = 7. 50μ" gold over nickel