

3.00 mm. S/ ROW SIDE ENTRY SMT HEADER



5769 SERIES. 3.00 mm. (0.118") pitch. With Board Lock.

General Features

- Available in 2 through 12 circuits
- Mates with 3.00 mm. crimp housing 5750 series
- Tin plated 0.64 mm. square pin
- Fully shrouded with polarized slot. Positive lock
- With metallic board lock

Materials

- Insulator: Nylon 6T UL 94 V-0
- Contact: Tin plated brass
- Operating temperature: -40°C to +105°C
- RoHS compliant

Dimensional Information

Electrical Features

- Voltage rating: < 250V
- Current rating: < 5 A
- Contact resistance: < 10 mΩ
- Dielectric withstanding voltage: 500 V AC/minute
- Insulation resistance: >1000 MΩ

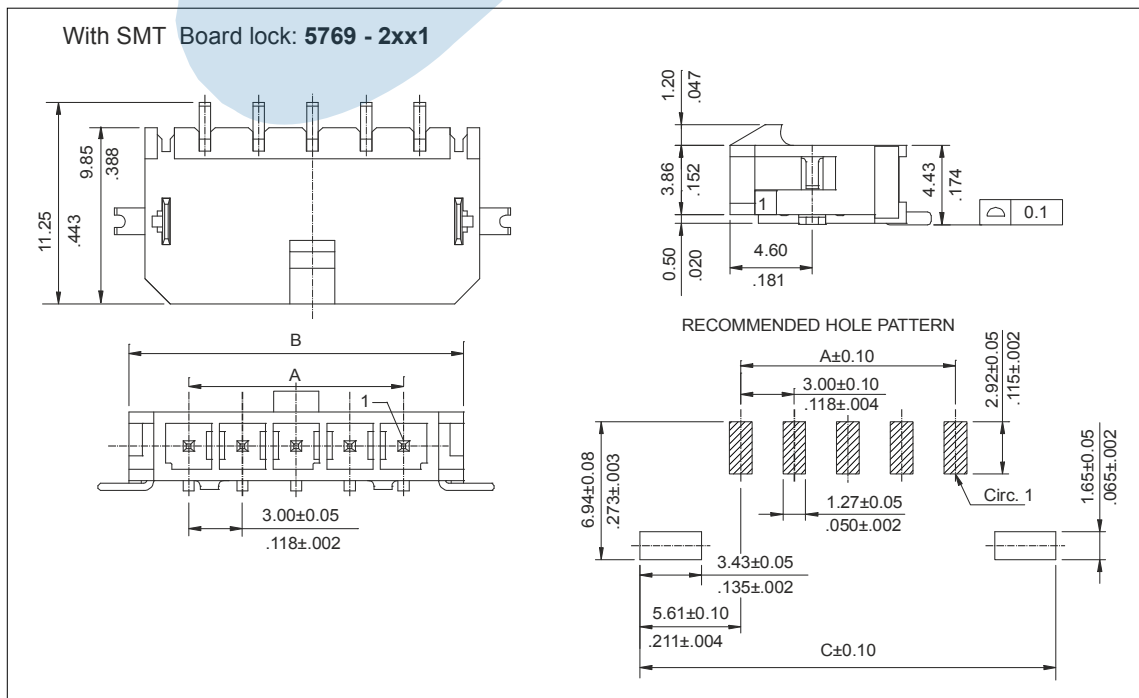
Mechanical Features

- Pin retention force to insulator: > 1,50 Kgf
- Durability: 25 cycles

Circuits	Part Number			Dimensions				
	With SMT board lock	With board lock	With plastic peg	A	B	C	D	E
2	5769 – 2021E*	5769 – 2022E*	5769 – 2023E*	3.00 (.118)	9.65 (.380)	14.20 (.559)	7.30 (.287)	-
3	5769 – 2031E*	5769 – 2032E*	5769 – 2033E*	6.00 (.236)	12.65 (.498)	17.20 (.677)	10.30 (.406)	-
4	5769 – 2041E*	5769 – 2042E*	5769 – 2043E*	9.00 (.354)	15.65 (.616)	20.20 (.795)	13.30 (.524)	4.70 (.185)
5	5769 – 2051E*	5769 – 2052E*	5769 – 2053E*	12.00 (.472)	18.65 (.734)	23.20 (.913)	16.30 (.642)	7.70 (.303)
6	5769 – 2061E*	5769 – 2062E*	5769 – 2063E*	15.00 (.591)	21.65 (.852)	26.20 (1.031)	19.30 (.760)	10.70 (.421)
7	5769 – 2071E*	5769 – 2072E*	5769 – 2073E*	18.00 (.709)	24.65 (.970)	29.20 (1.150)	22.30 (.878)	13.70 (.539)
8	5769 – 2081E*	5769 – 2082E*	5769 – 2083E*	21.00 (.827)	27.65 (1.088)	32.20 (1.268)	25.30 (.996)	16.70 (.657)
9	5769 – 2091E*	5769 – 2092E*	5769 – 2093E*	24.00 (.945)	30.65 (1.206)	35.20 (1.386)	28.30 (1.114)	19.70 (.776)
10	5769 – 2101E*	5769 – 2102E*	5769 – 2103E*	27.00 (1.063)	33.65 (1.325)	38.20 (1.504)	31.30 (1.232)	22.70 (.894)
11	5769 – 2111E*	5769 – 2112E*	5769 – 2113E*	30.00 (1.181)	36.65 (1.442)	41.20 (1.622)	34.30 (1.350)	25.70 (1.012)
12	5769 – 2121E*	5769 – 2122E*	5769 – 2123E*	33.00 (1.299)	39.65 (1.561)	44.20 (1.740)	37.30 (1.469)	28.70 (1.130)

(E*) Packing Options

- E = Blank. Tube
- E = 6. Reel



3.00 mm. S/ ROW SIDE ENTRY SMT HEADER



5769 SERIES. 3.00 mm. (0.118") pitch. With Board Lock.

