

SINGLE ROW CRIMP CONNECTOR HOUSING



5080 SERIES. 5.08 mm (0.200") pitch.

General Features

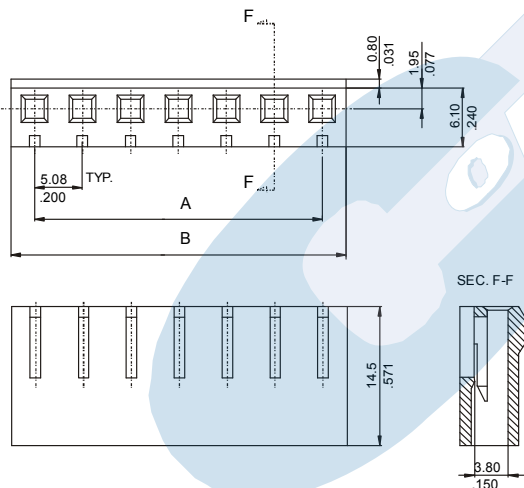
- Available in 2, through 16 circuits
- Mates with 5.08 mm pitch headers 5082, 5083 and 5084 series and 1.14 mm square/round pin headers 5086, 5087, 5088, 5071, 5072 and 5075 series
- Polarised with locking ramp
- Use crimp terminal 3979 and 3032

Materials

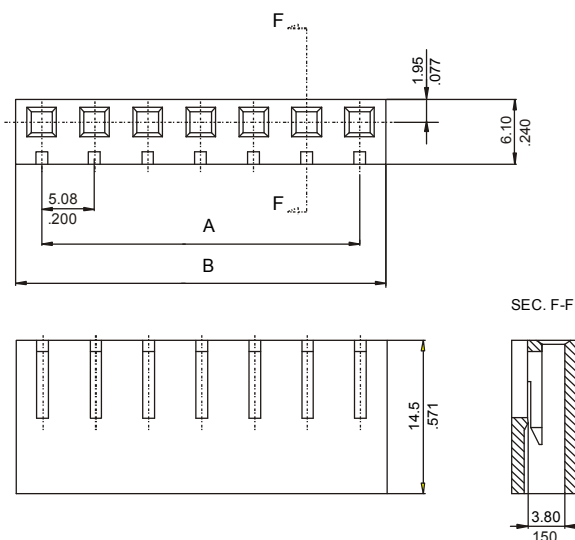
- Insulator: Nylon 66 UL 94 V-0
- Operating temperature: -40°C to +105°C
- RoHS compliant

Dimension Information

With locking ramp:



Without locking ramp:

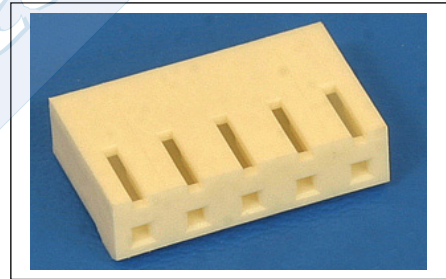


Electrical Features

- Voltage rating: < 250V
- Current rating: < 5 A
- Contact resistance: < 20 mΩ
- Dielectric withstanding voltage: 1500 V AC/minute
- Insulation resistance: > 1000 MΩ

Mechanical Features

- Contact retention force to the housing: > 2.00 Kgf
- Insertion force to header: < 1.25 Kgf/pin
- Insertion force to header: < 2.00 Kgf/pin
- Withdrawal force from header: < 0.50 Kgf/pin
- Durability: 25 cycles



Ordering Information:

5080 - P - XX - 1

1 2 3

1. Connector Series

2. (P) Polarising options

- P = 2. With locking ramp
- P = 3. Without locking ramp

3. (XX) Number of circuits

- Available in 2 through 16 circuits

Dimensions: (In mm.)

A = 5.08 x (XX*-1)

B = 5.08 x (XX)

* XX (Number of circuits)