

# S/ ROW DUAL BODY VERTICAL PIN HEADER



## 5075 SERIES. 5.08 mm (0.200") pitch.

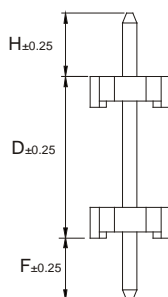
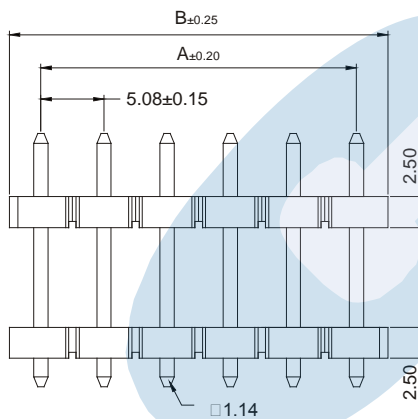
### General Features

- Available in 2 through 20 circuits
- Mates with PCB sockets 5.08 mm. pitch 1507, 1508, 1509, 5069, 5070 and wire housing 5080 and 5081 series
- 1.14 mm. square pin with different pin length
- With stand-off to minimise flux retention

### Materials

- Insulator: High temperature thermoplastic UL 94 V-0 LCP
- Contact: brass
- Operating temperature: -40°C to +105°C
- RoHS compliant

### Dimensional Information



MECANIZADO RECOMENDADO  
(Tolerancia ±0.05)

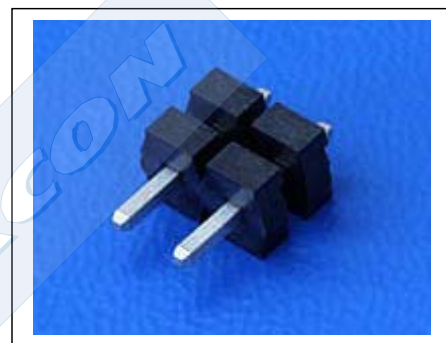


### Electrical Features

- Voltage rating: < 250V
- Current rating: < 7 A
- Contact resistance: < 20 mΩ
- Dielectric withstanding voltage: 1000 V AC/minute
- Insulation resistance: >1000 MΩ

### Mechanical Features

- Pin retention force to insulator: > 1.00 Kgf
- Durability: 50 cycles



### Ordering Information:

**5075 - T- XX- C**  
1 2 3 4

#### 1. Connector Series

#### 2. (T) Contact Plating

- T = 2. Tin plated  
Recommended Finish

#### 3. (XX) Number of circuits

- Available in 2 through 20 circuits

#### 4. (C) Pin dimensions

- C = 1. H = 5.10mm. D = 6.85mm. F = 2.30mm

Dimensions: (In mm.)

A = 5.08 x (XX\*-1)

B = 5.08 x (XX\*)

\* XX (Number of circuits)