

# SINGLE ROW VERTICAL PIN HEADER



## 3917 SERIES. 3.96 mm (0.156") pitch.

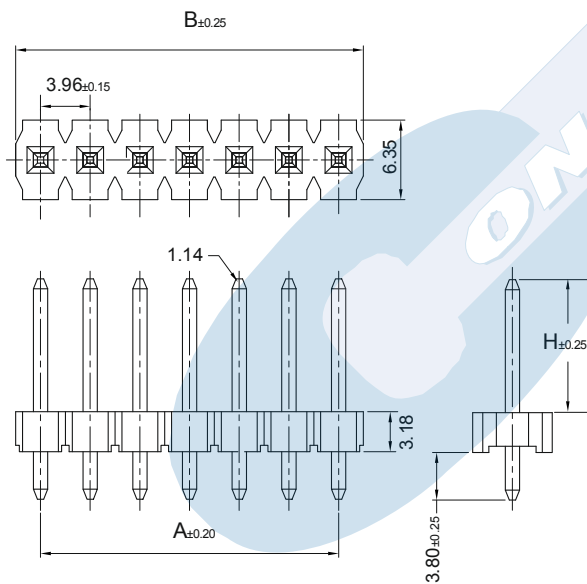
### General Features

- Available in 2 through 24 circuits
- Mates with PCB sockets 3.96mm pitch 3970, 3971, 3972, 3915, 3916 series and Wire housing 3940, 3930, 2631 and 3950 series
- 1.14 mm. square pin
- With standoff to minimise flux retention

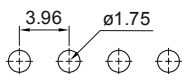
### Materials

- Insulator: High temperature thermoplastic UL 94 V-0
- Contact: brass
- Operating temperature: -40°C to +105°C
- RoHS compliant

### Dimensional Information



#### RECOMMENDED HOLE PATTERN



#### Dimensions: (In mm.)

A = 3.96 x (XX\*-1)  
B = 3.96 x (XX\*)

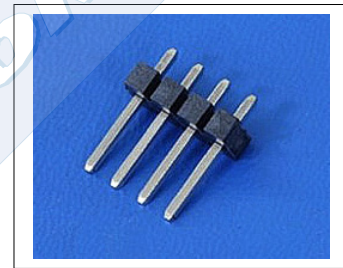
\* XX (Number of circuits)

### Electrical Features

- Voltage rating: < 250V
- Current rating: < 5 A
- Contact resistance: < 20 mΩ
- Dielectric withstanding voltage: 1000 V AC/minute
- Insulation resistance: >1000 MΩ
- Capacitance: 2 pF at 1 KHz

### Mechanical Features

- Pin retention force to insulator: > 1.00 Kgf
- Durability: 25 cycles



### Ordering Information:

**3917 - T- XX- C**  
1 2 3 4

#### 1. Connector Series

#### 2. (T) Contact Plating

- T = 2. Tin plated  
Recommended Finish

#### 3. (XX) Number of circuits

- Available in 2 through 24 circuits

#### 4. (C) Pin Dimensions

- C = 1. Dim. H=10.60 mm.
- C = 2. Dim. H=12.10 mm.