

# MINI JUMPER (SHUNT)



## 3051 / 3052 SERIES. 2.00 mm. (0.079") pitch.

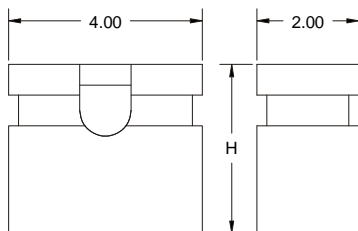
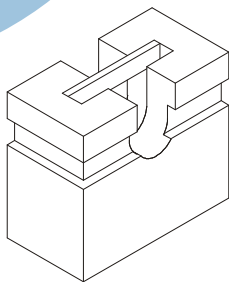
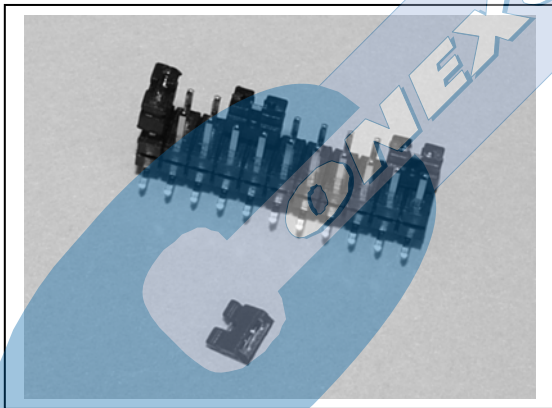
### General Features

- Available in 2 circuits
- Mates with pin header 2.00 mm. pitch single, dual and triple row
- Accepts 0.50 mm. square pin
- Dual beam contact with different plating
- Stackable row by row and end to end.
- Low profile 3.50 mm high

### Materials

- Insulator: PBT UL 94 V-0
- Contact: Phosphor bronze
- Operating temperature. -40°C to +105°C
- RoHS Compliant

### Dimension Information

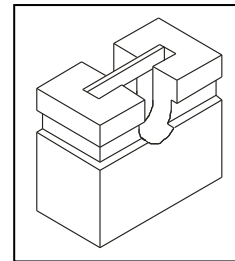


### Electrical Features

- Voltage rating: < 250V
- Current rating: < 3 A
- Contact resistance: < 20 mΩ
- Dielectric withstanding voltage: 600 V AC/minute
- Insulation resistance: >1000 MΩ

### Mechanical Features

- Mating force to pin header: < 0.60 Kgf/pin
- Unmating force from pin header: > 0.06 Kgf/pin
- Contact retention force to housing: > 0.50 Kgf/pin
- Durability: 50 cycles



### Ordering Information:

Dimension H = 3.50 mm.

**3051 - T- 02- 0**

1 2

1. Connector Series

2. (T) Contact Plating

- T = 2. Tin plated
- T = 3. Gold flash over nickel

Dimension H = 5.00 mm.

**3052 - T- 02- 0**

1 2

1. Connector Series

2. (T) Contact Plating

- T = 2. Tin plated
- T = 3. Gold flash over nickel