

# SMB CONNECTORS



## 2810 SERIES.

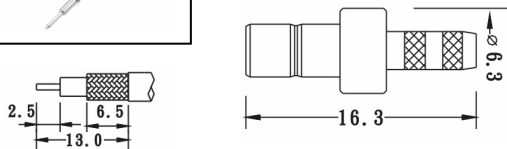
### SMB CONNECTORS

Product Application SMB Connectors: Applications Base Stations, Automotive, GPS, Telecom Cable Assemblies, Components, Instrumentation PC/LAN, Process Controls, Radio Boards Surge Protection, Test and Measurement Video Systems.

#### JACK CRIMP



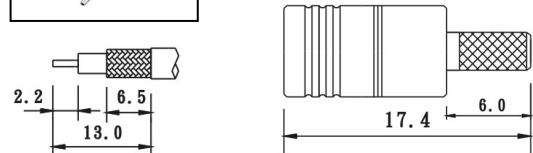
Part Number	$\Omega$	Cable
2810-73504	50	RG-174



#### PLUG CRIMP



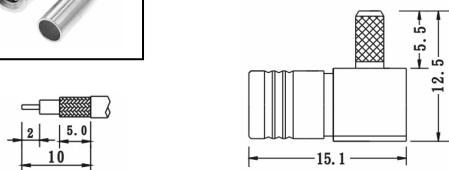
Part Number	$\Omega$	Cable
2810-73505	50	RG-174



#### PLUG CRIMP RIGHT ANGLE



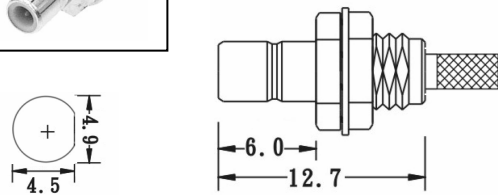
Part Number	$\Omega$	Cable
2810-23502	50	RG-316
2810-73502	50	RG-316
2810-74702	50	RG-174



#### JACK SOLDER CABLE BULKHEAD



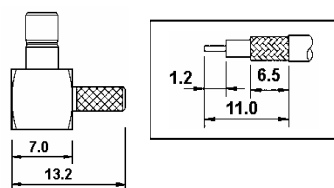
Part Number	$\Omega$	Cable
2810-23503	50	RG-316



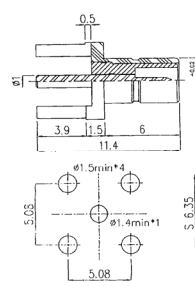
#### JACK CRIMP RIGHT ANGLE



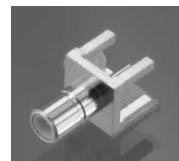
Part Number	$\Omega$	Cable
2810-73501	50	RG-58



#### STRAIGH JACK FOR PCB SOLDER



Part Number	$\Omega$
2810-20576	50

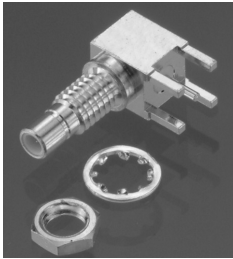


# CONECTORES/ADAPTADORES COAX. SMB

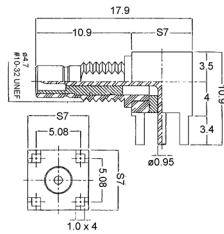


## SERIE 2810 - 2811.

### CONECTOR HEMBRA ACODADO PARA PCB



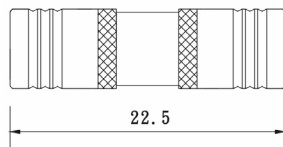
CÓDIGOS	$\Omega$
2810-10577	50



### ADAPTADOR SMB MACHO-MACHO



CÓDIGOS	$\Omega$
2811-10501	50



### ADAPTADOR SMB HEMBRA-HEMBRA



CÓDIGOS	$\Omega$
2811-10502	50

