

# CRIMP TERMINAL



## 2683 SERIES. 2.54 mm. (0.100 ") Pitch housing

### General Features

- Accommodates wire range AWG 22 through 26
- Use in housing 2.54 mm pitch 2680 and 2685 series
- Dual beam contact with locking lance
- Maximum insulation diameter 1.55 mm (0.061")

### Materials

- Contact: Tin pre plated Brass
- Operating temperature -40°C to +85°C

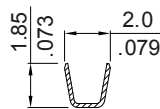
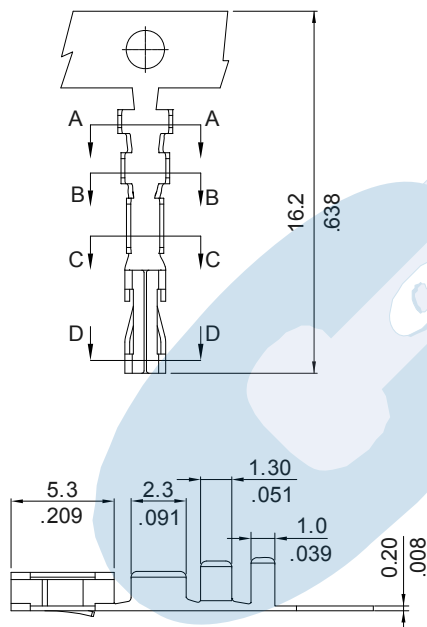
### Electrical Features

- Current rating: < 3 A
- Contact resistance: < 20 mΩ

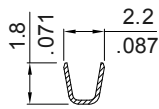
### Mechanical Features

- Durability: 25 cycles
- Wire pull-out force:
  - 4.00 Kgf 22 AWG
  - 3.00 Kgf 24 AWG
  - 2.00 Kgf 26 AWG

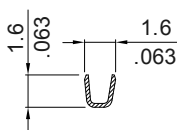
### Dimensional Information



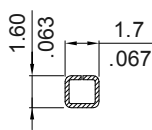
SEC. A-A



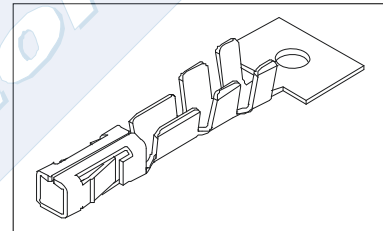
SEC. B-B



SEC. C-C



SEC. D-D



**2683 - T- 00- E**  
1 2

#### 1. Terminal Serie

#### 2. (T) Contact Plating

- T = **2.** Tin plated
- T = **3.** Gold flash over nickel
- T = **5.** 15μ" gold over nickel
- T = **6.** 30μ" gold over nickel

#### 2. (E) Packing Options

- E = **0.** Chain
- E = **1.** Loose Piece