

SINGLE ROW CRIMP CONNECTOR HOUSING



2651 SERIES. 2.54 mm (0.100") pitch.

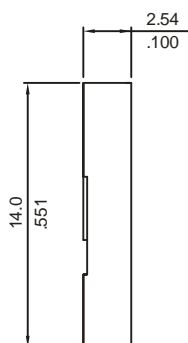
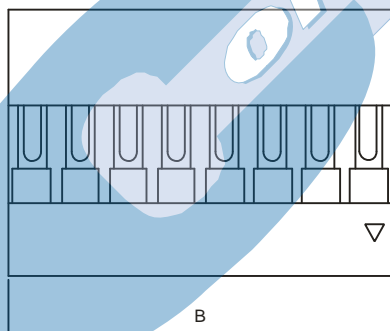
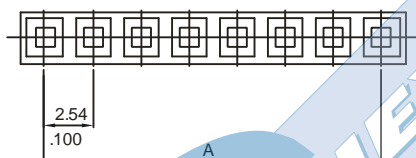
General Features

- Available in 2 through 30 circuits
- Mates with pin header 2.54 mm pitch,
- Accept 0.64 square pin
- Stackable row by row and end to end
- Use crimp terminal 2653 and 2663 series

Materials

- Insulator: PPO UL 94 V-1
- Operating temperature: -40°C to +105°C
- RoHS compliant

Dimension Information

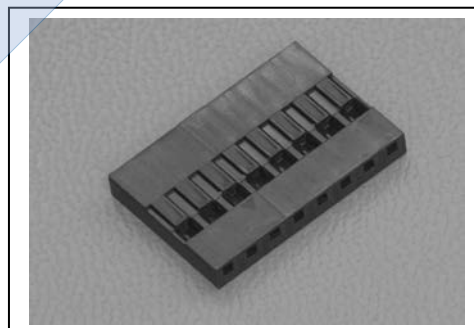


Electrical Features

- Voltage rating: < 250V
- Current rating: < 3 A
- Contact resistance: < 20 mΩ
- Dielectric withstanding voltage: 1000 V AC/minute
- Insulation resistance: >1000 MΩ

Mechanical Features

- Contact retention force to the housing: > 1.5 Kgf
- Insertion force to header: < 0.50 Kgf/pin
- Withdrawal force from header: < 0.10 Kgf/pin
- Durability: 25 cycles



Ordering Information:

2651 - 2- XX- 1

1 2 3

1. Connector Series

3. (XX) Number of circuits

- Available in 2 through 30 circuits

Dimensions: (In mm.)

A = 2.54 x (XX* - 1)

B = 2.54 x (XX)

* XX (Number of circuits)