

D/ ROW CRIMP POLARISING CON. HOUSING



2642 SERIES. 2.54 mm (0.100") pitch.

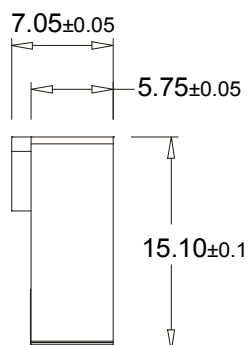
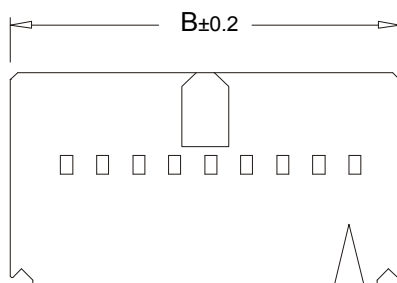
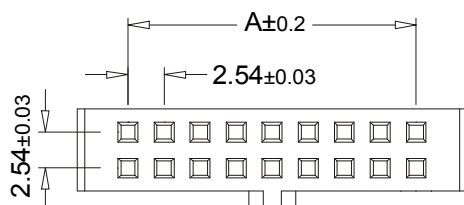
General Features

- Available 10, 14, 16, 20, 24, 26, 30, 34, 40, 50 and 64 circ.
- Mates with 2.54 mm pitch 5446, 5447, 4455, 5543, 5439, 5341, 5342, 5343, 5393, 5394 and 5395 pin headers
- 0.64 mm square pin
- Polarized bump on the side
- Use crimp terminal 2870

Materials

- Insulator: PBT UL 94 V-0
- Operating temperature: -25°C to +85°C
- RoHS compliant

Dimension Information

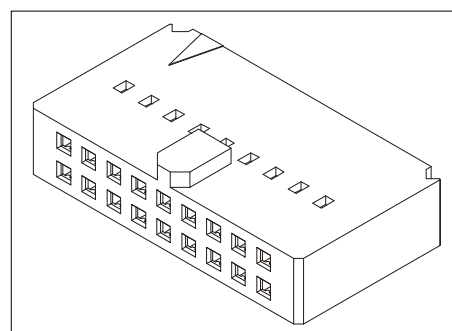


Electrical Features

- Voltage rating: < 250V
- Current rating: < 3 A
- Contact resistance: < 20 mΩ
- Dielectric withstanding voltage: 1000 V AC/minute
- Insulation resistance: >1000 MΩ

Mechanical Features

- Contact retention force to the housing: > 1.5 Kgf
- Insertion force to header: < 0.50 Kgf/pin
- Withdrawal force from header: < 0.10 Kgf/pin
- Durability: 25 cycles



Ordering Information:

2642 - 2- XX- 1

1 2

1. Connector Series

2. (XX) Number of circuits

- Available in 10 through 64 circuits

DIMENSIONS

$$A = 2.54 \left(\frac{XX}{2} - 1 \right) \quad B = 2.54 \left(\frac{XX}{2} \right) + 4.60$$

(XX) = Number of circuits