

SINGLE ROW SIDE ENTRY SMT HEADER



2627 SERIES. 2.50 mm. (0.098") Pitch.

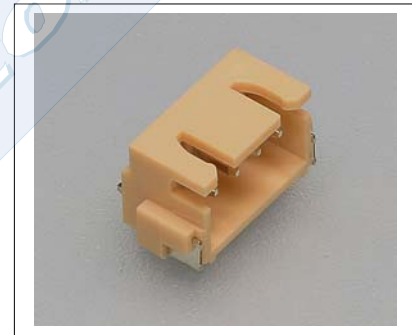
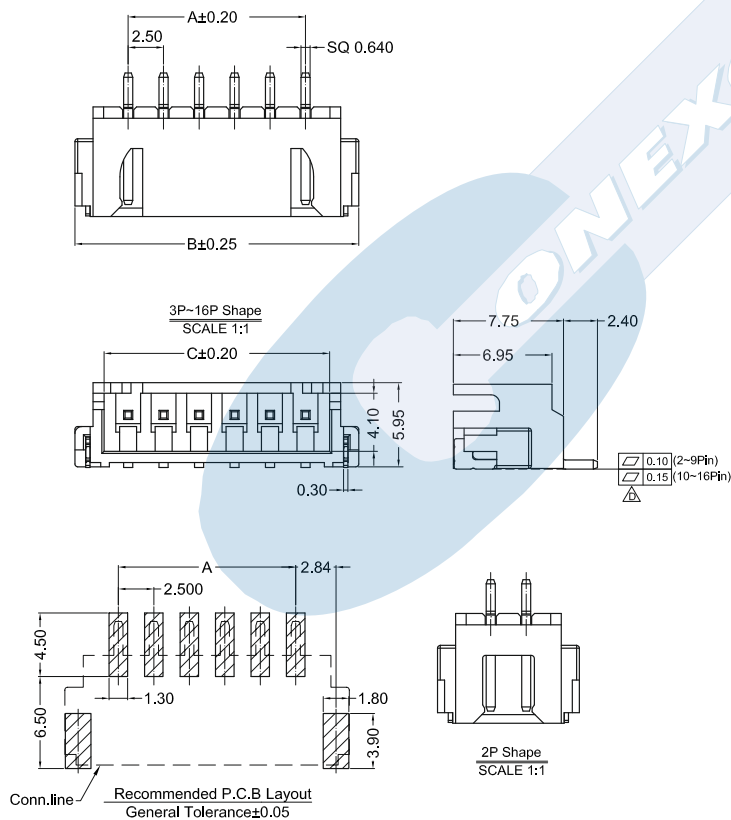
General Features

- Available in 2 through 20 circuits
- Mates with 2.50 mm. pitch crimp housing 2520 series
- Tin plated 0.64 mm. square pin
- Fully shrouded with polarized slot

Materials

- Insulator: PA 9T UL 94 V-0
- Terminal: Tin plated brass
- Operating temperature. -25°C to +85°C
- RoHS compliant

Dimensional Information



2627 - 2- XX- 1- E
1 2 3 4

1. Connector Serie

3. (XX) Number of circuits

- Available in 2 through 20 circuits

4. (E) Packing Options

- E = 1. Tube + Plastic Cover
- E = 2. Reel + Plastic Cover

Dimensions: (in mm.)

A = 2.50 x (XX*-1)

B = 2.50 x (XX*)+2.45

C = 2.50 x (XX*)+5.00

*XX (Number of circuits)

