

SINGLE ROW TOP ENTRY HEADER



2406 SERIES. 2.50 mm. (0.098") Pitch.

General Features

- Available in 2 through 20 circuits
- Mates with 2.50 mm. pitch IDC female 2405 series
- Tin plated 0.64 mm. square pin
- Fully shrouded with polarized slot

Materials

- Insulator: PBT +30% GF UL 94 V-0
- Terminal: Tin plated brass
- Operating temperature. -40°C to +105°C
- RoHS compliant

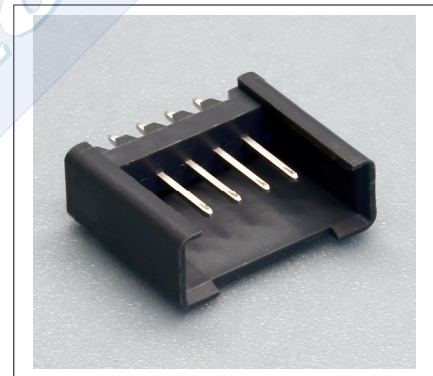
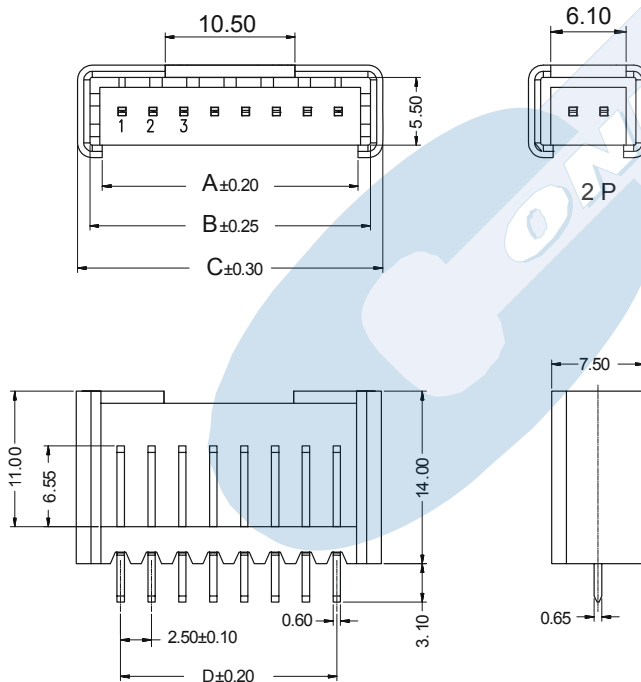
Dimensional Information

Electrical Features

- Voltage Rating: < 250 V
- Current Rating: < 3 A
- Contact resistance: < 20 mΩ
- Dielectric withstanding voltage: 1000 V AC/minute
- Insulation resistance: >1000 MΩ

Mechanical Features

- Pin retention force to insulator: > 0.80 Kg
- Durability: 25 cycles

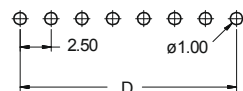


2406 - 2- XX- 1
1 2 3 4

1. Connector Serie

3. (XX) Number of circuits

- Available in 2 through 20 circuits



RECOMMENDED PCB LAYOUT
(Tolerance ±0.05)

Dimensions: (in mm.)

A = 2.50 x (XX*)+0.70

B = 2.50 x (XX*)+2.70

C = 2.50 x (XX*)+4.70

D = 2.50 x (XX*-1)

*XX (Number of circuits)