

CRIMP TERMINAL



2044 SERIES. 2.50 / 2.54 mm. (0.098 / 0.100 ") Pitch housing

General Features

- Accommodates wire range AWG 22 through 28
- Use in housing 2.50 and 2.54 mm pitch 2430 / 2544 series
- Flex contact with tin plated locking lance
- Maximum insulation diameter 1.50 mm (0.059")

Materials

- Contact: Tin pre plated Brass
- Operating temperature -40°C to +85°C

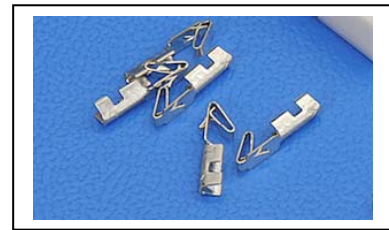
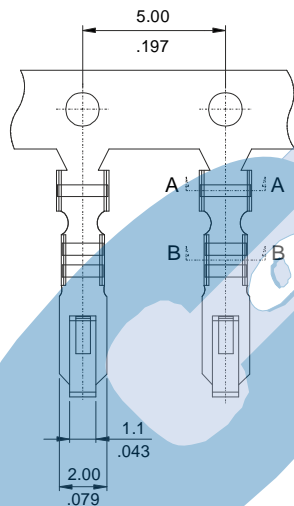
Dimensional Information

Electrical Features

- Current rating: < 3 A
- Contact resistance: < 20 mΩ

Mechanical Features

- Durability: 25 cycles
- Wire pull-out force:
 - 4.00 Kgf 22 AWG
 - 3.00 Kgf 24 AWG
 - 2.00 Kgf 26 AWG
 - 1.00 Kgf 28 AWG

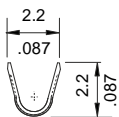
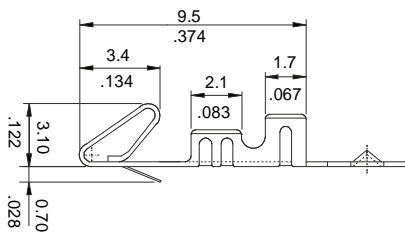


2044 - 2- 00- E
1 2

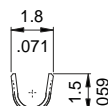
1. Terminal Serie

2. (E) Packing Options

- E = 0. Chain
- E = 1. Loose Piece



SEC. A-A



SEC. B-B