

# SINGLE ROW SIDE ENTRY SMT HEADER



## 1989 SERIES. 2.00 mm. (0.079") pitch.

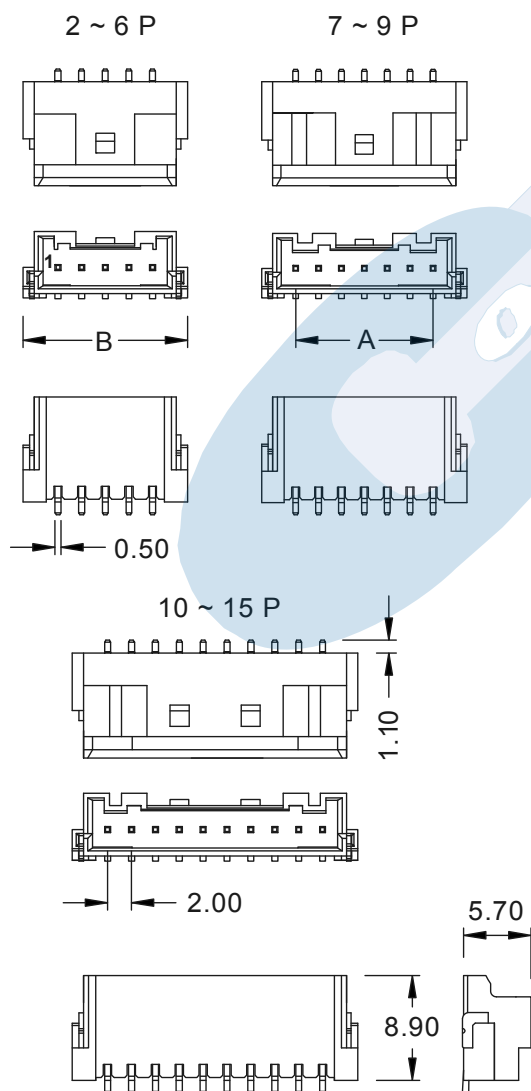
### General Features

- Available in 2 through 15 circuits
- Mates with 2.00 mm. pitch crimp housing 1985 series
- Tin plated square pin 0.50 mm.
- Polarised with positive lock
- Fully shrouded with soldering tabs to fix to PCB

### Materials

- Insulator: Nylon 6/T UL 94 V-0
- Contact: Tin plated brass
- Operating temperature: -25°C to +85°C
- RoHS compliant

### Dimension Information



**Dimensions:** (In mm.)

**A** = 2.00 x (XX\*-1)

**B** = 2.00 x (XX\*)+4.00

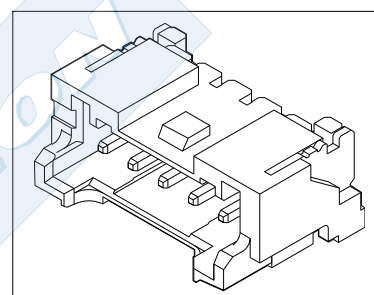
\* **XX** (Number of circuits)

### Electrical Features

- Voltage rating: < 250V
- Current rating: < 3 A
- Contact resistance: < 20 mΩ
- Dielectric withstanding voltage: 800 V AC/minute
- Insulation resistance: >1000 MΩ

### Mechanical Features

- Pin retention force to insulator: > 1.00 Kgf
- Durability: 25 cycles



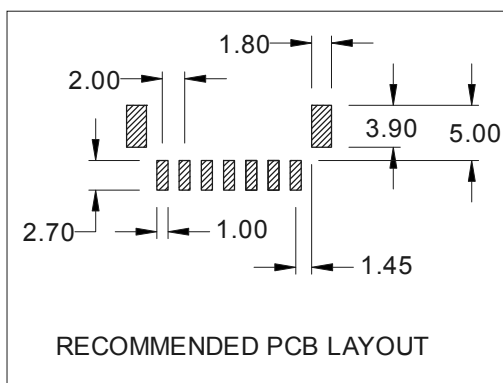
### Ordering Information:

**1989 - 2- XX- 2**  
1 3 4

#### 1. Connector Series

#### 3. (XX) Number of circuits

- Available in 2 through 15 circuits



RECOMMENDED PCB LAYOUT