

DUAL ROW TOP ENTRY SMT HEADER



1554 SERIES. 1.50 (0.049") mm pitch.

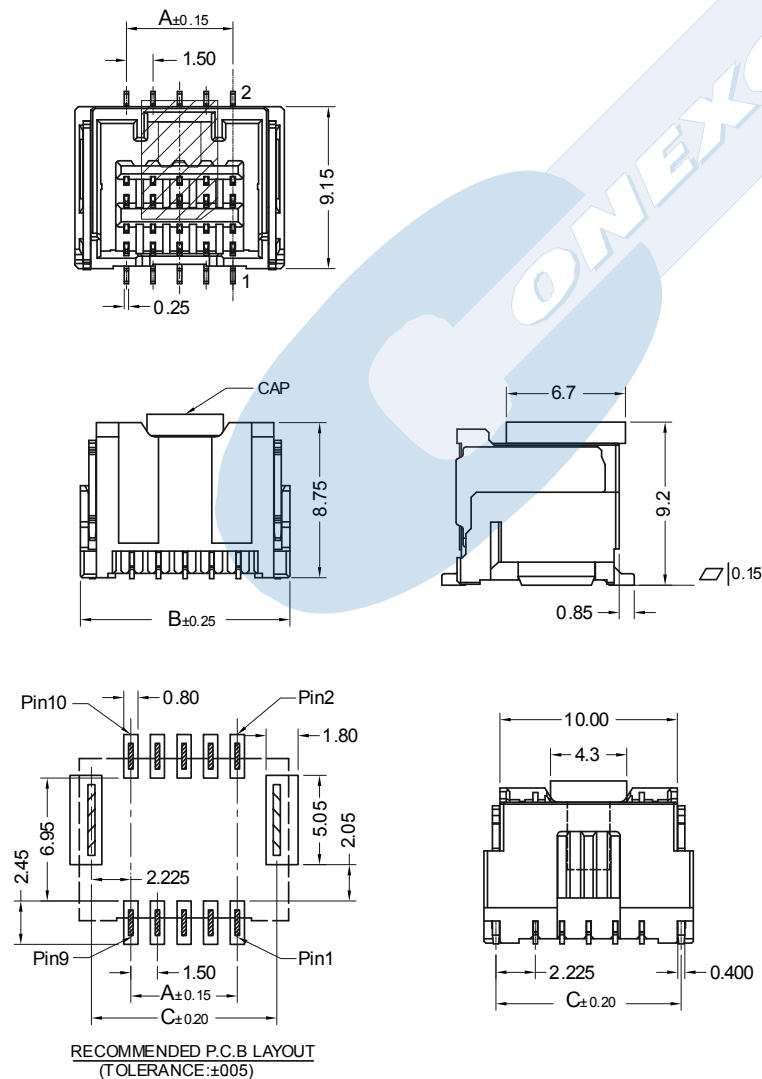
General Features

- Available in 10 through 30 circuits
- Mates with 1.50 mm crimp housing 1556 series
- Tin plated pin
- Positive locking system
- Low profile

Materials

- Insulator: High temperature plastic UL 94 V-0
- Contact: Tin plated phosphor bronze
- Operating temperature: -40°C to +85°C
- RoHS Compliant

Dimension Information

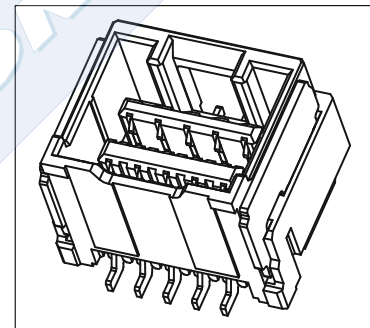


Electrical Features

- Voltage rating: < 100V
- Current rating: < 2 A
- Contact resistance: < 20 mΩ
- Dielectric Withstanding Voltage: 250 V AC/minute
- Insulation Resistance: > 500 MΩ

Mechanical features

- Pin retention force to insulator: > 0.30 Kg
- Withdrawal force: > 0.020 Kg/pin
- Pin retention force to insulator: > 0.30 Kg
- Durability: 25 cycles



Ordering Information:

1554 - T- XX- E
1 2 3 4

1. Connector Serie

2. (T) Contacts Plating

- T = 2. Tin-plated.
RECOMMENDED FINISH

3. (XX) Number of circuits

- Available in 10 through 30 circuits

4. (E) Packing Options

- E = 1. Pad + Tube
- E = 2. Pad + Reel

Dimensions: (In mm.)

A = $1.50 \times (XX/2 - 1)$
B = $1.50 \times (XX/2) + 4.30$
C = $1.50 \times (XX/2) + 2.95$

(XX) = Number of circuits