

TOP ENTRY SMT MALE CONNECTOR



1333 SERIES. 1.27 mm. (0.050") pitch.

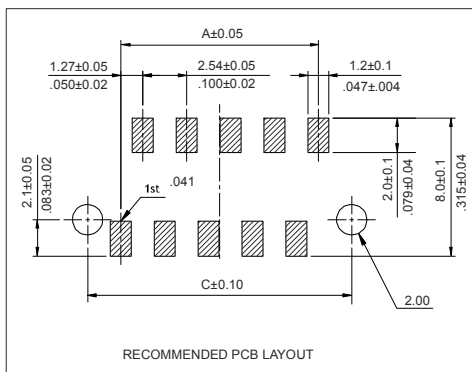
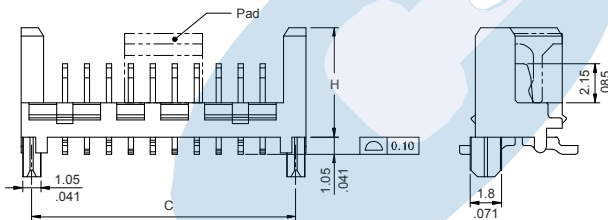
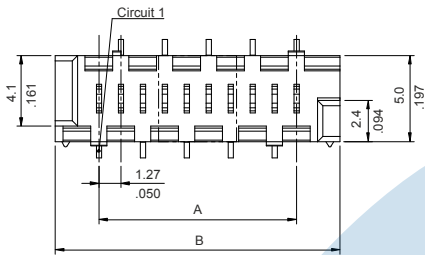
General Features

- Available in 4 through 26 circuits
- Mates with 1.27 mm. IDC connectors 1330 series
- Allows connections cable to PCB

Materials

- Insulator: High temperature plastic UL 94V-0
- Terminal: Phosphor bronze
- Operating temperature. -40°C to +105°C
- RoHS compliant

Dimension Information



Dimensions: (In mm.)

- A = 1.27 x (XX-1)
- B = 1.27 x (XX)+3.75
- C = 1.27 x (XX)+2.58

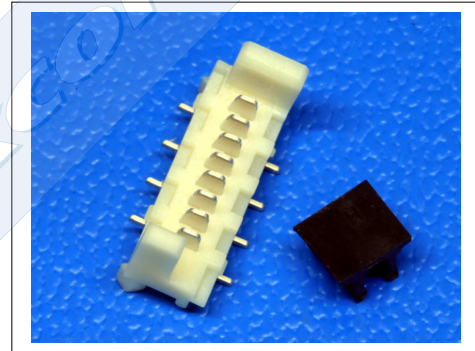
* XX (N° of circuits)

Electrical Features

- Voltage rating: < 250V
- Current rating: < 1.20 A
- Contact resistance: < 15 mΩ
- Dielectric withstanding Voltage: 750 V AC/minute
- Insulation resistance: >1000 MΩ
- Capacitance: < 2 pF at 1 KHz

Mechanical Features

- Pin retention force to insulator: > 0,15 Kgf
- Mating force: < 0.50 Kgf per contact
- Un-mating force: > 0.10 Kgf per contact
- Durability: 25 cycles



Ordering Information:

1333 - T- XX- C E
 1 2 3 4 5

1. Connector Series

2. (T) Contact Plating

- T = 2. Tin over nickel plated

3. (XX) Number of circuits

- Available in 4 through 26 circuits

4. (C) Connector Options

- C=1. With positioning pegs; H: 6.40mm.
- C=2. Without positioning pegs; H: 6.40mm.
- C=3. With positioning pegs; H: 4.10mm
- C=4. Without positioning pegs; H: 4.10mm

5. (E) Packing Options

- E = 1. Tube + Pad
- E = 2. Reel + Pad