

# DUAL ROW VERTICAL SOCKET HEADER



## 1287 SERIES. 1.27 x 2.54 mm. (0.050" x 0.100") pitch.

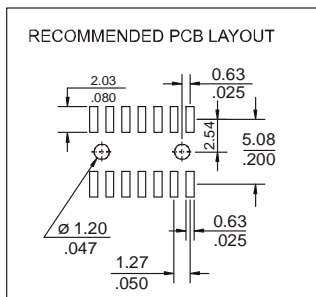
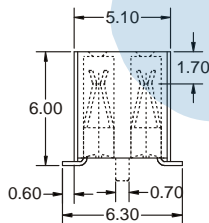
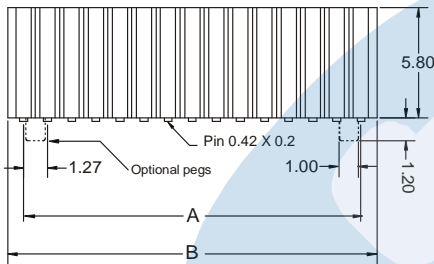
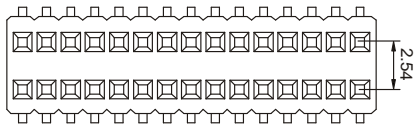
### General Features

- Available in 4 through 100 circuits
- Mates with pin headers 1.27 mm pitch
- Accept 0.46 square or round pin
- 6.00 mm. high
- Dual beam contact with different plating

### Materials

- Insulator: Polyester LCP UL 94 V-0
- Contact: Phosphor bronze
- Operating temperature: -40°C to +105°C
- RoHS Compliant

### Dimension Information



### DIMENSIONS:

$$A = 1.27 \left( \frac{XX}{2} - 1 \right) \quad B = 1.27 \left( \frac{XX}{2} \right)$$

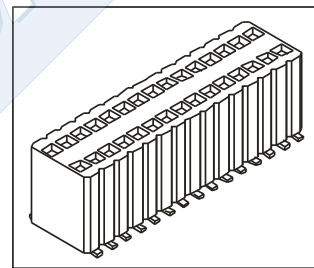
XX = Number of circuits

### Electrical Features

- Voltage rating: < 100V
- Current rating: < 1 A
- Contact resistance: < 20 mΩ
- Dielectric withstanding voltage: 300 V AC/minute
- Insulation resistance: >1000 MΩ
- Capacitance: < 2 pF at 1 KHz

### Mechanical Features

- Insertion force receptacle/plug: < 0,20 Kgf/pin
- Unmating force receptacle/plug: > 0,015 Kgf/pin
- Contact retention force to housing: > 0,15 Kgf/pin
- Durability: 50 cycles



### Ordering Information:

**1287 - T- XX- P E**  
 1 2 3 4 5

#### 1. Connector Series

#### 2. (T) Contact Plating

- T = 2. Tin plated
- T = 3. Gold flash over nickel  
Recommended Finish
- T = 5. 15μ" gold over nickel
- T = 6. 30μ" gold over nickel

#### 3. (XX) Number of circuits

- Available in 04 through 100 circuits  
(For 100 circuits replace XX with 00)

#### 4. (P) Fixing Post

- P = 1. Without fixing post
- P = 2. With fixing post

#### 5. (E) Connector Packaging

- E = 1. Tube + Pad
- E = 2. Reel + Pad
- E = 3. Tube + Film
- E = 4. Reel + Film
- E = 5. Tube + Metallic Pad
- E = 6. Reel + Metallic Pad