

# SINGLE ROW SIDE ENTRY HEADER



## 1169 SERIES. 1.25 (0.049") mm pitch.

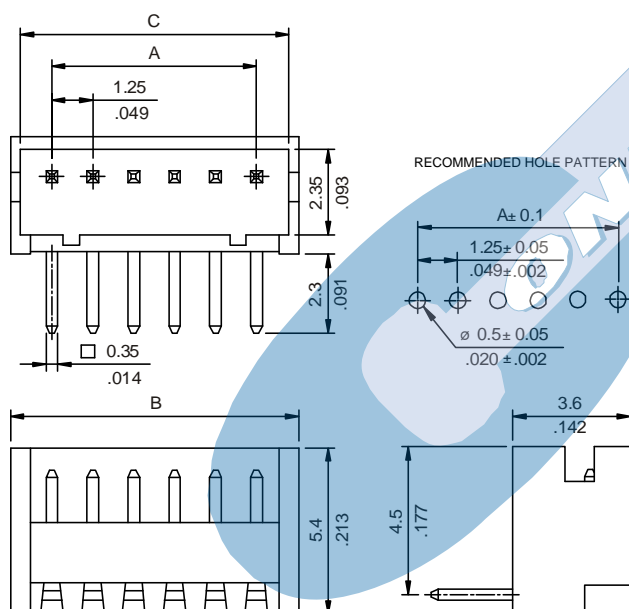
### General Features

- Available in 2 through 15 circuits
- Mates with 1.25 mm crimp housing 1165 serie
- Tin plated pin 0.35 mm. square
- Locking slots provide secure mating
- Polarization and low profile

### Materials

- Insulator: nylon 66 UL 94 V-0
- Contact: Tin plated brass
- Operating temperature: -25°C to +85°C
- RoHS compliant

### Dimension Information

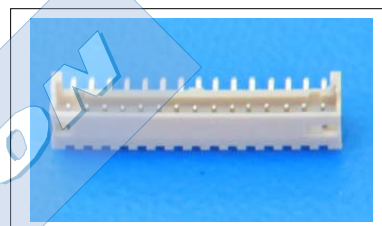


### Electrical Features

- Voltage rating: < 125V
- Current rating: < 1 A
- Contact resistance: < 20 mΩ
- Dielectric withstanding voltage: 250 V AC/minute
- Insulation resistance: > 100 MΩ

### Mechanical features

- Pin retention force to insulator: > 0.40 Kg f
- Durability: 25 cycles



**1169 - T- XX- 1**  
1 2 3 4

#### 1. Connector Serie

#### 2. (T) Contacts Plating

- T = 2. Tin-plated.  
RECOMMENDED FINISH

#### 3. (XX) Number Of Contacts

- Available in 2 through 15 circuits

**Dimensions:** (In mm.)

A = 1.25 x (XX-1)

B = 1.25 x (XX)+1.85

C = 1.25 x (XX)+0.65