

# SINGLE ROW TOP ENTRY SMT HEADER



## 1158 SERIES. 1.25 (0.049") mm pitch.

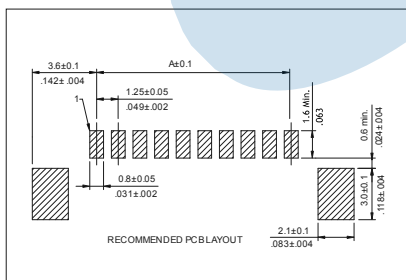
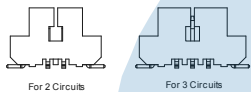
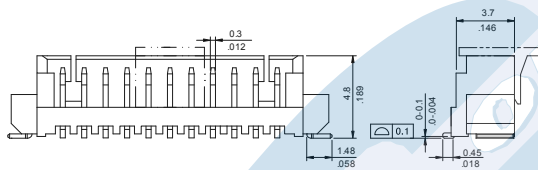
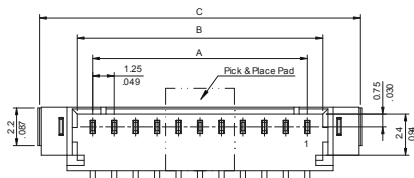
### General Features

- Available in 2 through 15 circuits
- Mates with 1.25 mm crimp housing 1154 serie
- Tin plated pin
- Locking slots provide secure mating
- Polarization and low profile

### Materials

- Insulator: Polyester 66 UL 94 V-0
- Contact: Tin plated brass
- Operating temperature: -25°C to +85°C
- RoHS compliant

### Dimension Information



Dimensions: (In mm.)

A = 1.25 x (XX-1)  
 B = 1.25 x (XX)+0.65  
 C = 1.25 x (XX)+4.85

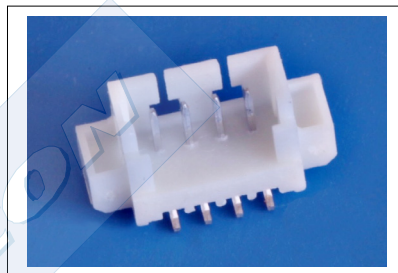
(XX) = Number of circuits

### Electrical Features

- Voltage rating: < 125V
- Current rating: < 1 A
- Contact resistance: < 20 mΩ
- Dielectric withstanding voltage: 250 V AC/minute
- Insulation Resistance: >100 MΩ

### Mechanical features

- Pin retention force to insulator: > 0.80 Kg f
- Durability: 25 cycles



## 1158 - T- XX- 1- E

1 2 3 4

### 1. Connector Serie

### 2. (T) Contacts Plating

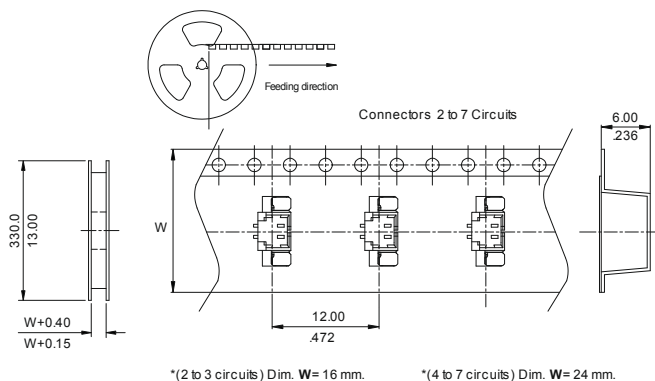
- T = 2. Tin plated.
- RECOMMENDED FINISH

### 3. (XX) Number of circuits

- Available in 2 through 15 circuits

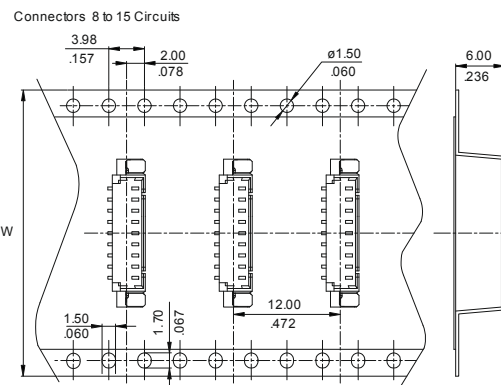
### 4. (E) Packing Options

- E = 1. Pad + Tube
- E = 2. Pad + Reel
- E = 8. Reel (Without Pad)



\*(2 to 3 circuits) Dim. W = 16 mm.

\*(4 to 7 circuits) Dim. W = 24 mm.



\*(8 to 12 circuits) Dim. W = 32 mm.

\*(13 to 15 circuits) Dim. W = 44 mm.