

SINGLE ROW TOP ENTRY SMT HEADER



1027 SERIES. 1.00 mm. (0.039") Pitch.

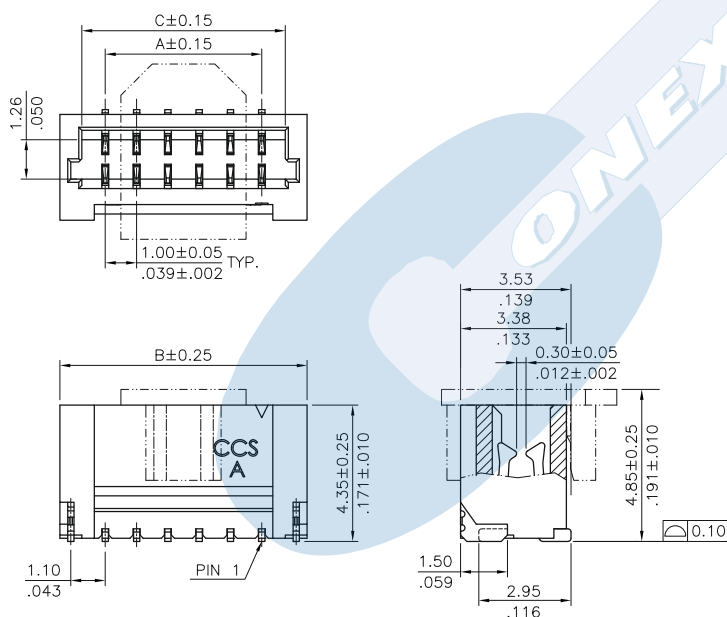
General Features

- Available in 2 through 20 circuits
- Mates with 1.00 mm pitch crimp housing 1025 serie
- Shrouded tin plated contacts
- Soldering tabs to fix on PCB
- Very low profile (4.35 mm.)

Materials

- Insulator: High temperature plastic UL 94 V-0
- Terminal: Cooper alloy
- Operating temperature: -25°C to +85°C
- RoHS compliant

Dimension Information



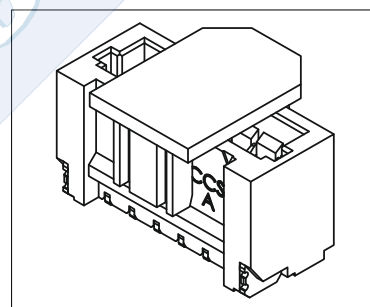
Recommended P.C. Board Layout

Electrical Features

- Voltage rating: < 125 V
- Current rating: < 1 A
- Contact resistance: < 20 mΩ
- Dielectric withstanding voltage: 200 V AC/minute
- Insulation resistance: > 100 MΩ

Mechanical Features

- Pin retention force to insulator: > 0.20 Kgf
- Locking force: > 1.5 Kgf (2 pins); > 2 Kgf (3-6 pins); > 3 Kgf (6-20 pins)
- Durability: 25 cycles



1027 - T- XX- 1- E

1 2 3 4

1. Connector Serie

2. (T) Contacts Plating

- T = 2. Tin plated
RECOMMENDED FINISH

3. (XX) Number of circuits

- Available in 2 through 20 circuits

4. (E) Packing Options

- E = 2. Pad + Reel

Dimensions:

A = 1.00 x (XX*-1)
B = 1.00 x (XX)+1.90
C = 1.00 x (XX)+0.50

(XX) = Number of circuits