

BOARD TO BOARD CONNECTOR RECEPTACLE



0829 SERIE. 0.80 mm. (0.032") Pitch.

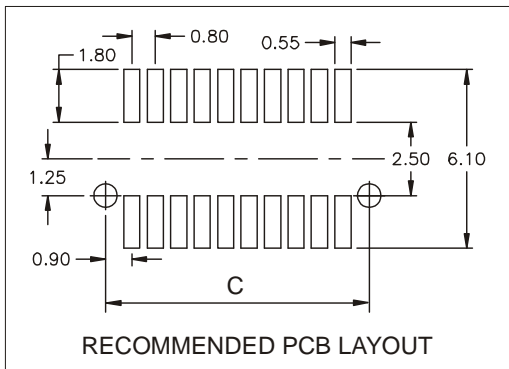
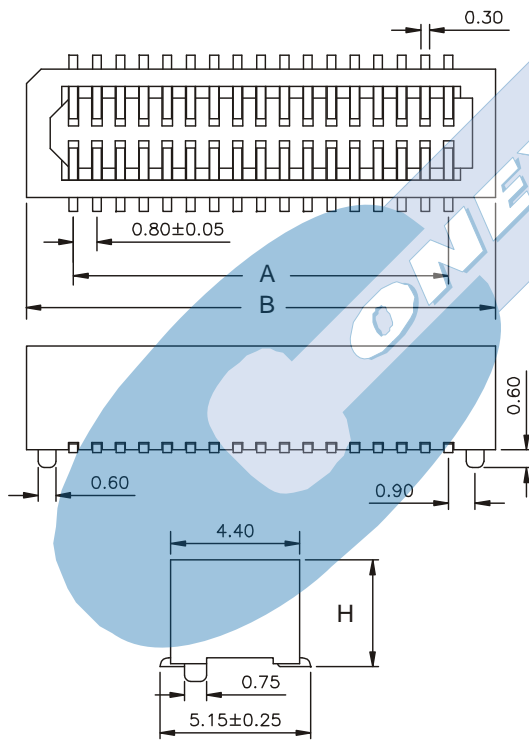
General Features

- Available in 8 through 50 circuits
- Mates with plug 0,80 mm pitch 0828 serie
- With polarizing fixing post for PCB
- Allows different connection high
- Plastic fixing post for alignment of connector pins

Materials

- Insulator: Polyester nylon 9T UL 94 V-0
- Contact: Phosphor bronze
- Operating temperature. -40°C to +105°C

Dimension Information

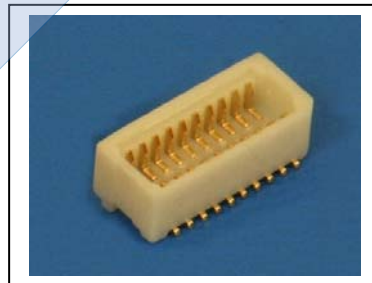


Electrical Features

- Voltage rating: < 50 V
- Current rating: < 0,5 A
- Contact resistance: < 20 mΩ
- Dielectric withstanding voltage: 200 V AC/minute
- Insulation resistance: >100 MΩ
- Capacitance: < 2 pF at 1 KHz

Mechanical Features

- Insertion force receptacle/plug: < 0,10 Kgf/pin
- Unmating force receptacle/plug: > 0,01 Kgf/pin
- Contact retention force to housing: > 0,10 Kgf/pin
- Durability: 50 cycles



0829 - T- XX- L

1 2 3 4

1. Connector Serie

2. (T) Contacts Plating

- T = 3. Gold flash over Ni.
RECOMMENDED FINISH

3. (XX) Number of circuits

- Available in 8 to 50 circuits

4. (L) Connector High

- L = 1. H = 3.85 mm.
- L = 2. H = 3.15 mm.
- L = 3. H = 5.15 mm.

DIMENSIONS

$$A = 0.8 \left(\frac{XX}{2} - 1 \right) \quad B = 2.40 + 0.8 \left(\frac{XX}{2} \right) \quad C = 0.8 \left(\frac{XX}{2} \right) + 0.80$$

(XX) = Number of circuits