

0.80 mm. FCC/FPC SIDE ENTRY ZIF SMT CON.



0814 SERIES. 0.80mm (0.032") Pitch.

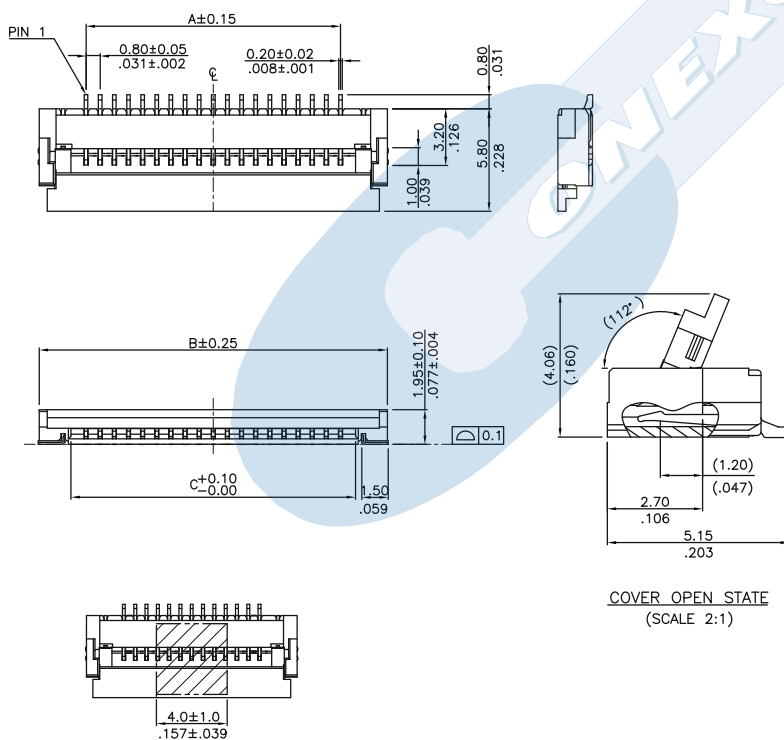
General Features

- Available in 4 to 35 circuits
- Zero insertion force (ZIF) and high retention force
- Accept 0.30 mm thickness FPC
- Downside contact. Low profile 1.95 mm. high
- Easy for FPC installation and reliable operation
- With metal fixed SMT tabs to secure connector on PCB

Materials

- Body: High temperature plastic UL 94 V-0
- Slider: High temperature plastic 94 V-0
- Contact: Phosphor bronze
- Fixed tab: Brass
- Operating temperature. -40°C to + 85°C
- RoHS compliant

Dimensions

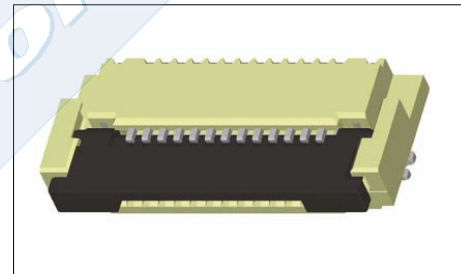


Electrical Features

- Voltage rating: < 50 V
- Current rating: < 0.50 A
- Contact resistance: < 30 mΩ
- Dielectric Withstanding Voltage: 250 V AC/minute
- Insulation Resistance: >100 MΩ

Mechanical Features

- Contact retaining force in insulator : > 0.30 Kgf
- FCC/FPC retention force: > 0.03 Kgf/contact
- Durability: 20 cycles



Ordering Information:

0814 - 2- XX- 1- E
 1 2 3 4

1. Connector Series

2. (T) Contact Plating

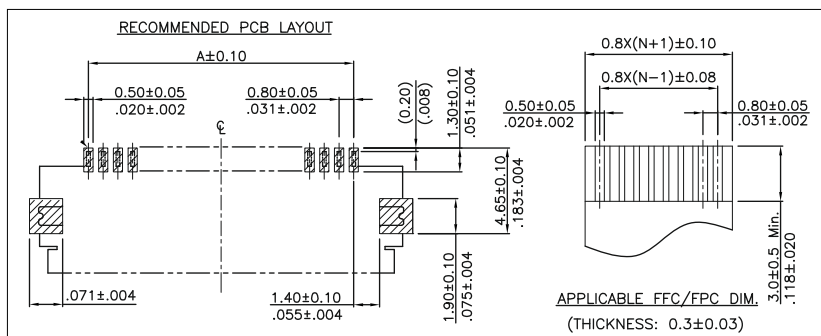
- T = 2. Tin plated

3. (XX) Number of circuits

- Available in 4 to 35 circuits

4. (E) Packing Options

- E = 2. Reel + Film



DIMENSIONS:

- A= 0.80 x (xx*-1)
- B= 0.80 x (xx*) + 4.50
- C= 0.80 (xx*) + 0.65
- *(XX) = Circuits