

# CRIMP TERMINAL HOUSING

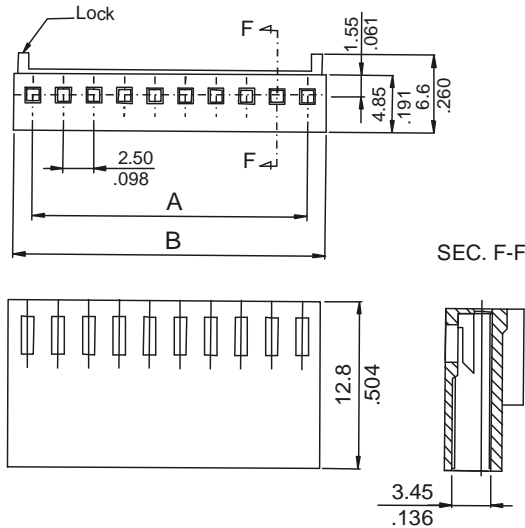


## 2430 SERIES. 2.50mm(0.098"). Housing

### Features

- Available in 2 through 20 circuits
- Available with or without locking ramp
- Material: Nylon 6/6 UL 94V-0
- Accepts 2044 series terminal
- Mates with 2.50mm(0.025") pitch single row headers 2431 and 2432 series

### Dimensional information



### Ordering and Dimensional Information

Circuit Size	Part Number		Dimensions	
	With lock	Without lock	A	B
02	2430-2021	2430-2022	2,50(0,098)	5,50(0,217)
03	2430-2031	2430-2032	5,00(0,197)	8,00(0,315)
04	2430-2041	2430-2042	7,50(0,295)	10,50(0,413)
05	2430-2051	2430-2052	10,00(0,394)	13,00(0,512)
06	2430-2061	2430-2062	12,50(0,492)	15,50(0,610)
07	2430-2071	2430-2072	15,00(0,591)	18,00(0,709)
08	2430-2081	2430-2082	17,50(0,689)	20,50(0,807)
09	2430-2091	2430-2092	20,00(0,787)	23,00(0,906)
10	2430-2101	2430-2102	22,50(0,886)	25,50(1,004)
11	2430-2111	2430-2112	25,00(0,984)	28,00(1,102)
12	2430-2121	2430-2122	27,50(1,083)	30,50(1,201)
13	2430-2131	2430-2132	30,00(1,181)	33,00(1,299)
14	2430-2141	2430-2142	32,50(1,280)	35,50(1,398)
15	2430-2151	2430-2152	35,00(1,378)	38,00(1,496)
16	2430-2161	2430-2162	37,50(1,476)	40,50(1,594)
17	2430-2171	2430-2172	40,00(1,575)	43,00(1,693)
18	2430-2181	2430-2182	42,50(1,673)	45,50(1,791)
19	2430-2191	2430-2192	45,00(1,772)	48,00(1,890)
20	2430-2201	2430-2202	47,50(1,870)	50,50(1,988)

# CRIMP TERMINAL

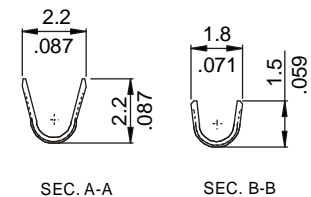
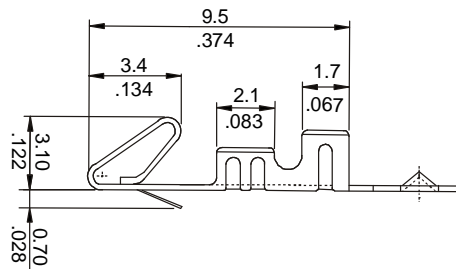
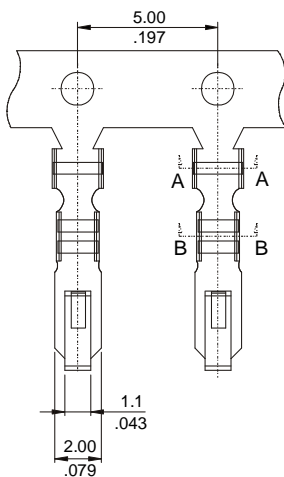


## 2044 SERIES. AWG 22-28.

### Features

- Mates with 0.64mm(.025") square pin
- Wires ranges AWG 22-28
- Material: Pre-tinned copper Alloy
- Different material options are available
- Mates with 2544 A, 2544 B and 2430 series socket
- Insulation Diameter: 1.50mm(0.059") Maximum

### Dimensional Information



### Ordering and Dimensional Information

Reel Quantity	Part Number	Material	Wire Ranges	Insulation Diameter
10,000 Pcs (Reel)	2044 - 2000	Copper alloy	AWG 22 - 28	1.50 (0.059") Max.
Loose Piece	2044 - 2001	Copper alloy	AWG 22 - 28	1.50 (0.059") Max.