

# WIRE HOLDER CONNECTOR

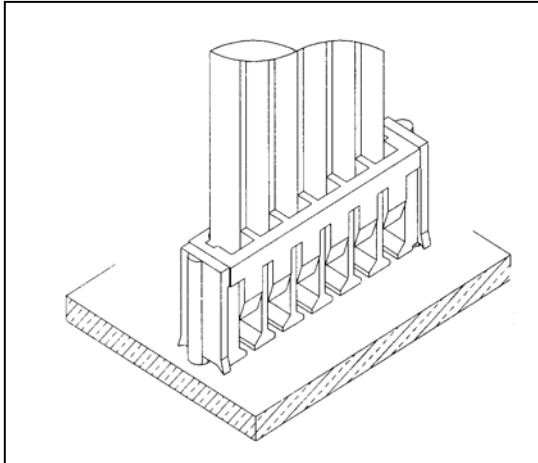


## 2423 SERIES. 2.50mm(0.098"). For PCB Insert

### Features

- Available in 2, 3, 4, 5, 6, 7, 8, 10 and 11 circuits
- Material: Glass filled nylon 6/6 UL94V-0
- Colour: Natural
- Applicable PC board thickness: 1.60mm
- Accommodates wires ranges AWG 22 - 28

### Dimensional Information



### Ordering and Dimensional Information

Circuit Size	Part Number	Dimensions	
		A	B
02	<b>2423-2021</b>	7,50(0,295)	2,50(0,098)
03	<b>2423-2031</b>	10,00(0,394)	5,00(0,197)
04	<b>2423-2041</b>	12,50(0,492)	7,50(0,295)
05	<b>2423-2051</b>	15,00(0,591)	10,00(0,394)
06	<b>2423-2061</b>	17,50(0,689)	12,50(0,492)
07	<b>2423-2071</b>	20,00(0,787)	15,00(0,591)
08	<b>2423-2081</b>	22,52(0,886)	17,50(0,689)
10	<b>2423-2101</b>	27,50 (1,083)	22,50(0,886)
11	<b>2423-2111</b>	30,00 (1,182)	25,00(0,984)

Type	Dimensions		
	C	D	S
	Ø 1.20 (0.047") to 1.60 (0.063")	-	-
	Ø 1.20 (0.047") to 1.60 (0.063")	-	2.50 (0.098")
	Ø 1.20 (0.047") to 1.60 (0.063")	7.00 (0.276)	2.50 (0.098")

