

# MALE RIGHT ANGLE SMT WITH EXTRACTORS



## 1345 SERIES. 1.27 x 1.27 mm. (0.050 x 0.050"). For PCB solder

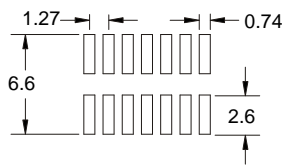
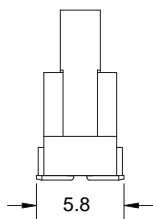
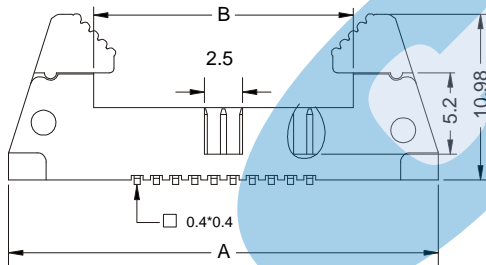
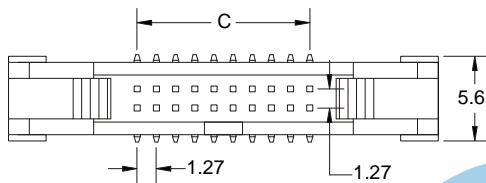
### Features

- Available in 10, 12, 14, 16, 20, 22, 26, 30, 34, 40, 44 and 50 circuits
- Insulator material: Nylon 6T UL 94V-0
- Mates with female header 1341 serie
- 0.40 x 0.40 mm square pin lin phosphor bronze with different plating
- Completely polarised
- With extractors

### Dimensional information:

### Ordering and dimensional information:

Circuit Size	Part Number	Dimensions		
		A	B	C
10	<b>1345 - T100E</b>	22.12 (0.871)	10.86 (0.427)	5.08 (0.200)
12	<b>1345 - T120E</b>	23.39 (0.881)	12.13 (0.477)	6.35 (0.250)
14	<b>1345 - T140E</b>	24.66 (0.971)	13.40 (0.527)	7.62 (0.300)
16	<b>1345 - T160E</b>	25.93 (1.021)	14.67 (0.577)	8.89 (0.350)
20	<b>1345 - T200E</b>	28.47 (1.121)	17.21 (0.677)	11.43 (0.450)
22	<b>1345 - T220E</b>	29.74 (1.171)	18.48 (0.727)	12.70 (0.500)
26	<b>1345 - T260E</b>	32.28 (1.271)	21.02 (0.827)	15.24 (0.600)
30	<b>1345 - T300E</b>	34.82 (1.371)	23.56 (0.927)	17.78 (0.700)
34	<b>1345 - T340E</b>	37.36 (1.471)	26.10 (1.027)	20.32 (0.800)
40	<b>1345 - T400E</b>	41.17 (1.621)	29.91 (1.177)	24.13 (0.950)
44	<b>1345 - T440E</b>	43.71 (1.721)	32.45 (1.277)	26.67 (1.050)
50	<b>1345 - T500E</b>	47.52 (1.871)	36.26 (1.427)	30.48 (1.200)



RECOMMENDED PCB LAYOUT

### T = Contact Plating

- T = 2. Tin plated
- T = 3. Gold flash over 50µ" nickel.  
Recommended Finish
- T = 5. 15µ" gold over 50µ" nickel
- T = 6. 30µ" gold over 50µ" nickel

### E = parking Options

- E = 1. Tube+ Plastic Pad
- E = 2. Reel+ Plastic Pad

