

# FEMALE TERMINALS FOR 6760 HOUSING



## 6762-6764-6766 SERIES. 2.13 mm. (0.083"). Diameter Crimp Terminal.

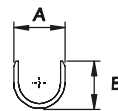
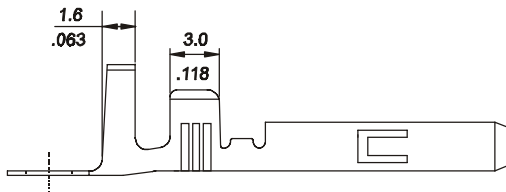
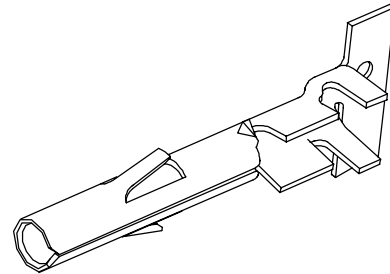
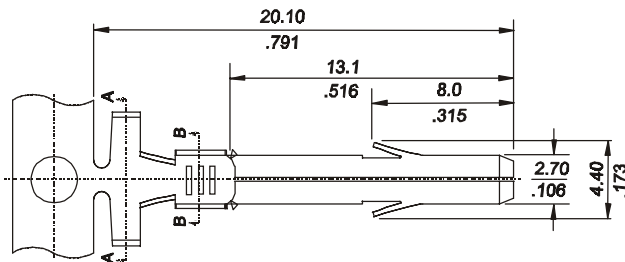
### Features

- Lateral Carrier
- Material: Tin-plated brass or Phosphor Bronze
- Current Rating: 11 A maximum
- Voltage rating: 600 V
- Ambient temperature range: -55° to +105°

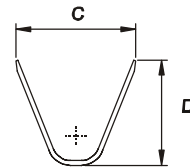
### Dimensional Information

### Ordering and Dimensional Information

Type	Part Number		Dimensions				Wire Ranges	Reel Quantity
	Brass	Phosp. Bronze	A	B	C	D		
Female	6762 - 2000	6762 - 2010	2.90	3.50	4.50	4.40	AWG 16 - 20	4,000 Pcs (Reel)
Female	6762 - 2001	6762 - 2011	2.90	3.50	4.50	4.40	AWG 16 - 20	Loose Piece
Female	6764 - 2000	6764 - 2010	2.40	2.40	3.40	3.40	AWG 18 - 22	4,000 Pcs (Reel)
Female	6764 - 2001	6764 - 2011	2.40	2.40	3.40	3.40	AWG 18 - 22	Loose Piece
Female	6766 - 2000	6766 - 2010	2.90	3.50	6.40	5.70	AWG 12 - 14	4,000 Pcs (Reel)
Female	6766 - 2001	6766 - 2011	2.90	3.50	6.40	5.70	AWG 12 - 14	Loose Piece



SEC. A-A



SEC. B-B