

CRIMP TERMINAL (AWG 18-22)



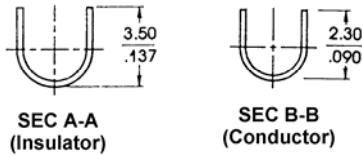
6731 & 6732 SERIES. 1.57mm(0.062") Crimp Terminal.

Features

- Lateral Carrier
- Material: Tin-plated brass
- Current Rating: 5A maximum
- Wire Ranges: AWG 18-22
- Insertion force: 1.60 Kgs.
- Pin disconnection force: 1.25 Kgs.

Dimensional Information

Ordering and Dimensional Information



Type	Part Number	Material	Wire Ranges	Reel Quantity
Male	6731 – 2000	Brass, Tin Plated	AWG 18 – 22	5,000 Pcs (Reel)
Male	6731 – 2001	Brass, Tin Plated	AWG 18 – 22	Loose Piece
Female	6732 – 2000	Brass, Tin Plated	AWG 18 – 22	5,000 Pcs (Reel)
Female	6732 – 2001	Brass, Tin Plated	AWG 18 – 22	Loose Piece

