

3.96mm DUAL ROW EDGE CARD CONNECTOR



4202 SERIES. 3.96mm(0.156"). For PCB Solder.

Features

- Available in 10/20, 12/24, 15/30, 18/36, 22/44, 25/50, 31/62 and 37/74 circuits
- Insulator Material: P.B.T. UL 94V-0
- Contact Material: Brass
- Bifurcated anti-lever beam type
- Accept P.C. Board thickness: 1.40 – 1.60mm
- For easy insertion and extraction to P.C. Board

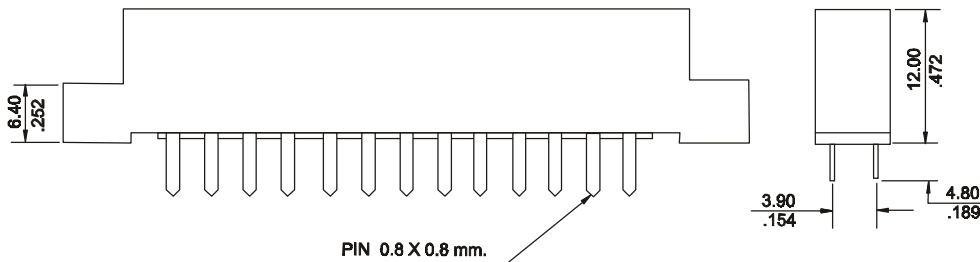
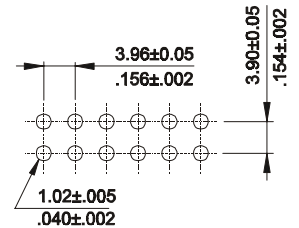
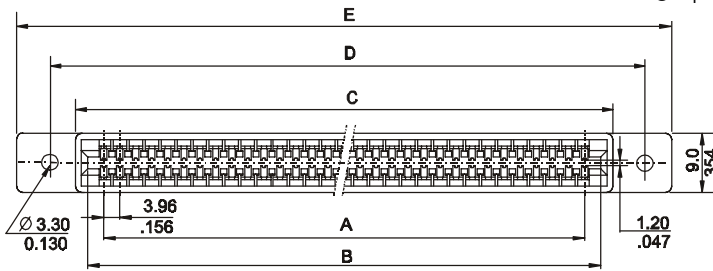
Dimensional Information

Ordering and Dimensional Information

Circuit Size	Part Number	Dimensions				
		A	B	C	D	E
10/20	4202-T101	22.90 (0.902)	28.00 (1.103)	32.40 (1.276)	40.10 (1.570)	47.60 (1.875)
12/24	4202-T121	27.86 (1.097)	33.00 (1.300)	37.40 (1.437)	45.10 (1.776)	52.70 (2.075)
15/30	4202-T151	35.58 (1.401)	40.60 (1.599)	45.00 (1.772)	52.70 (2.075)	60.30 (2.375)
18/36	4202-T181	43.18 (1.700)	48.30 (1.902)	52.70 (2.075)	60.30 (2.375)	67.90 (2.674)
22/44	4202-T221	53.34 (2.100)	58.40 (2.300)	62.80 (2.473)	70.50 (2.776)	78.10 (3.075)
25/50	4202-T251	60.96 (2.400)	66.00 (2.599)	70.40 (2.772)	78.10 (3.075)	85.70 (3.375)
31/62	4202-T311	76.20 (3.000)	81.30 (3.201)	85.70 (3.375)	93.40 (3.678)	101.00 (3.977)
37/74	4202-T371	91.44 (3.600)	96.50 (3.800)	100.90 (3.973)	108.60 (4.276)	116.20 (4.575)

T = Contact Plating

- T = 3. Gold flash over 50μ" nickel
- T = 5. 15μ" gold over 50μ" nickel



RECOMMENDED HOLE PATTERN

