

FRICTION LOCK BREAKAWAY

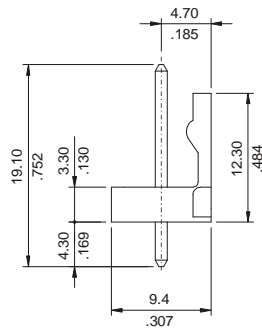
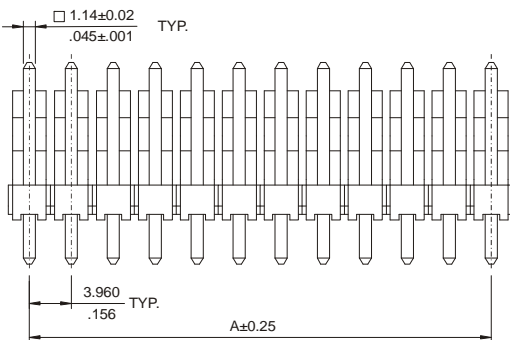
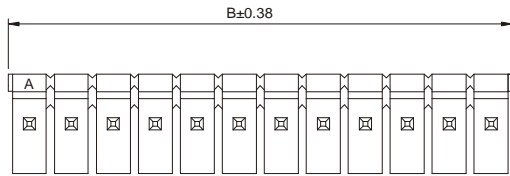


3910 SERIES. 3.96 mm. (0.156"). Square Pin Header. For PCB Solder

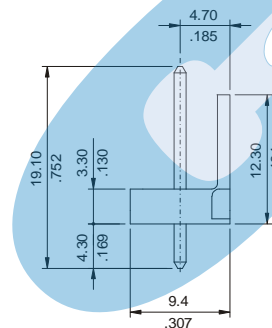
Features

- Available in 2 through 24 circuits
- Insulation: Glass Filled Polyester 6/6 UL 94V-0
- 1.14 mm (.045") tin plated square pin in copper alloy
- Mate most of 3.96mm. pitch connector in the market
- Available with flange back wall for polarization

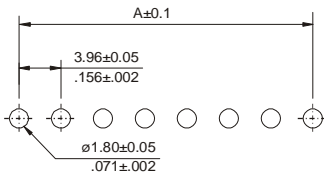
Dimensional Information



With Locking



W/O Locking



Recommended P.C. Board Layout

Ordering and Dimensional Information

Circuit Size	Part Number		Dimensions	
	With locking	W/O Locking	A	B
02	3910-2021	3910-2022	3,96(0,156)	7,90(0,311)
03	3910-2031	3910-2032	7,90(0,311)	11,90(0,469)
04	3910-2041	3910-2042	11,90(0,469)	15,80(0,622)
05	3910-2051	3910-2052	15,80(0,622)	19,80(0,780)
06	3910-2061	3910-2062	19,80(0,780)	23,80(0,937)
07	3910-2071	3910-2072	23,80(0,937)	27,70(1,091)
08	3910-2081	3910-2082	27,70(1,091)	31,70(1,248)
09	3910-2091	3910-2092	31,70(1,248)	35,60(1,402)
10	3910-2101	3910-2102	35,60(1,402)	39,60(1,559)
11	3910-2111	3910-2112	39,60(1,559)	43,60(1,717)
12	3910-2121	3910-2122	43,60(1,717)	47,50(1,870)
13	3910-2131	3910-2132	47,50(1,870)	51,50(2,028)
14	3910-2141	3910-2142	51,50(2,028)	55,40(2,181)
15	3910-2151	3910-2152	55,40(2,181)	59,40(2,339)
16	3910-2161	3910-2162	59,40(2,339)	63,40(2,496)
17	3910-2171	3910-2172	63,40(2,496)	67,30(2,650)
18	3910-2181	3910-2182	67,30(2,650)	71,30(2,807)
19	3910-2191	3910-2192	71,30(2,807)	75,20(2,961)
20	3910-2201	3910-2202	75,24(2,962)	79,20(3,118)
21	3910-2211	3910-2212	79,20(3,118)	83,16(3,274)
22	3910-2221	3910-2222	83,16(3,274)	87,12(3,430)
23	3910-2231	3910-2232	87,12(3,430)	91,08(3,586)
24	3910-2241	3910-2242	91,08(3,586)	95,04(3,742)

