

SINGLE IN LINE ZIP SOCKET

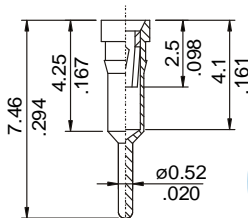
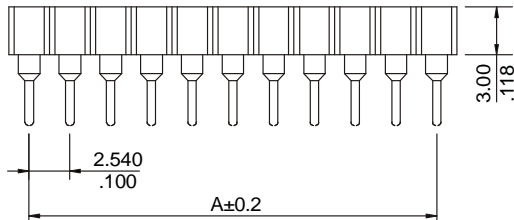
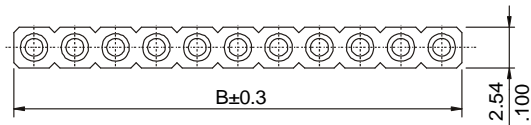


8340 SERIES. 2.54mm(0.100"). For PCB Solder

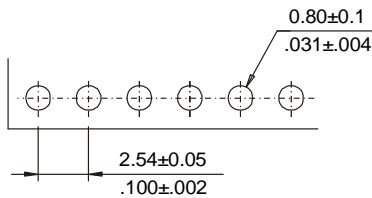
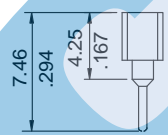
Features

- Available in 2 through 40 circuits
- Insulation Material: PPS UL 94V-0
- Contact Material: Gold plated beryllium copper
- Sleeve Material: Tin lead plated copper alloy
- High reliability turned terminal with multiple finger contact
- Seal and prevent flux wicking
- For other options consult the Sales Office

Dimensional Information



Pin detail



RECOMMENDED HOLE PATTERN

Ordering and Dimensional Information

Circuit Size	Part Number	Dimensions	
		A	B
02	8340-T021	2,54(0,100)	4,98(0,196)
03	8340-T031	5,08(0,200)	7,52(0,296)
04	8340-T041	7,62(0,300)	10,06(0,396)
05	8340-T051	10,16(0,400)	12,60(0,496)
06	8340-T061	12,70(0,500)	15,14(0,596)
07	8340-T071	15,24(0,600)	17,68(0,696)
08	8340-T081	17,78(0,700)	20,22(0,796)
09	8340-T091	20,32(0,800)	22,76(0,896)
10	8340-T101	22,86(0,900)	25,30(0,996)
11	8340-T111	25,40(1,000)	27,84(1,096)
12	8340-T121	27,94(1,100)	30,38(1,196)
13	8340-T131	30,48(1,200)	32,92(1,296)
14	8340-T141	33,02(1,300)	35,46(1,396)
15	8340-T151	35,56(1,400)	38,00(1,496)
16	8340-T161	38,10(1,500)	40,54(1,596)
17	8340-T171	40,64(1,600)	43,08(1,696)
18	8340-T181	43,18(1,700)	45,62(1,796)
19	8340-T191	45,72(1,800)	48,16(1,896)
20	8340-T201	48,26(1,900)	50,70(1,996)
21	8340-T211	50,80(2,000)	53,24(2,096)
22	8340-T221	53,34(2,100)	55,78(2,196)
23	8340-T231	55,88(2,200)	58,32(2,296)
24	8340-T241	58,42(2,300)	60,86(2,396)
25	8340-T251	60,96(2,400)	63,40(2,496)
26	8340-T261	63,50(2,500)	65,94(2,596)
27	8340-T271	66,04(2,600)	68,48(2,696)
28	8340-T281	68,58(2,700)	71,02(2,796)
29	8340-T291	71,12(2,800)	73,56(2,896)
30	8340-T301	73,66(2,900)	76,10(2,996)
31	8340-T311	76,20(3,000)	78,64(3,096)
32	8340-T321	78,74(3,100)	81,18(3,196)
33	8340-T331	81,28(3,200)	83,72(3,296)
34	8340-T341	83,82(3,300)	86,26(3,396)
35	8340-T351	86,36(3,400)	88,80(3,496)
36	8340-T361	88,90(3,500)	91,34(3,596)
37	8340-T371	91,44(3,600)	93,88(3,696)
38	8340-T381	93,98(3,700)	96,42(3,796)
39	8340-T391	96,52(3,800)	98,96(3,896)
40	8340-T401	99,06(3,900)	101,50(3,996)

T = Contact Plating

- T = 3. Gold flash over 50μ" nickel
- T = 4. 10μ" gold over 50μ" nickel
Recommended Finish
- T = 5. 15μ" gold over 50μ" nickel
- T = 6. 30μ" gold over 50μ" nickel