

SINGLE ROW CRIMP TYPE SOCKET

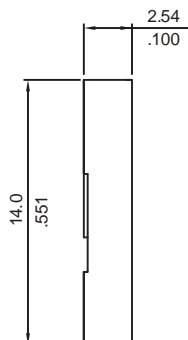
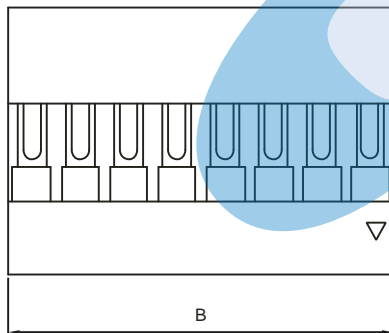
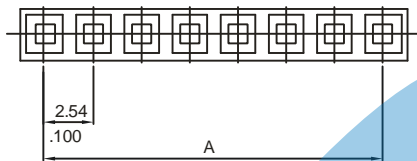
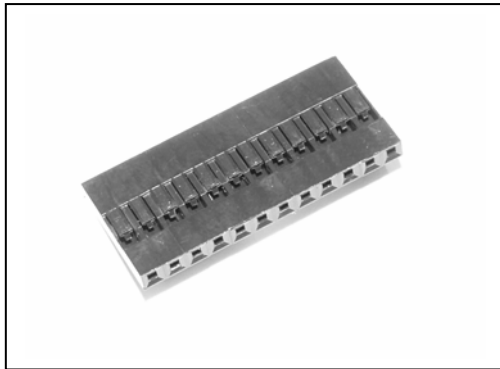


2651 SERIES. 2.54mm(0.100"). Crimp Type Socket

Features

- Available in 2 through 30 circuits
- Mates with 2.54mm(.100") single row headers with 0.64mm square pin
- Accepts 2653 and 2663 crimp terminals
- For wire to wire and wire to PCB connection
- Material: Nylon 6/6 UL94V-2

Dimensional Information



Ordering and Dimensional Information

Circuit Size	Part Number	Dimensions	
		A	B
02	2651-3021	2,54(0,100)	5,08(0,200)
03	2651-3031	5,08(0,200)	7,62(0,300)
04	2651-3041	7,62(0,300)	10,16(0,400)
05	2651-3051	10,16(0,400)	12,70(0,500)
06	2651-3061	12,70(0,500)	15,24(0,600)
07	2651-3071	15,24(0,600)	17,78(0,700)
08	2651-3081	17,78(0,700)	20,32(0,800)
09	2651-3091	20,32(0,800)	22,86(0,900)
10	2651-3101	22,86(0,900)	25,40(1,000)
11	2651-3111	25,40(1,000)	27,94(1,100)
12	2651-3121	27,94(1,100)	30,48(1,200)
13	2651-3131	30,48(1,200)	33,02(1,300)
14	2651-3141	33,02(1,300)	35,56(1,400)
15	2651-3151	35,56(1,400)	38,10(1,500)
16	2651-3161	38,10(1,500)	40,64(1,600)
17	2651-3171	40,64(1,600)	43,18(1,700)
18	2651-3181	43,18(1,700)	45,72(1,800)
19	2651-3191	45,72(1,800)	48,26(1,900)
20	2651-3201	48,26(1,900)	50,80(2,000)
21	2651-3211	50,80(2,000)	53,34(2,100)
22	2651-3221	53,34(2,100)	55,88(2,200)
23	2651-3231	55,88(2,200)	58,42(2,300)
24	2651-3241	58,42(2,300)	60,96(2,400)
25	2651-3251	60,96(2,400)	63,50(2,500)
26	2651-3261	63,50(2,500)	66,04(2,600)
27	2651-3271	66,04(2,600)	68,58(2,700)
28	2651-3281	68,58(2,700)	71,12(2,800)
29	2651-3291	71,12(2,800)	73,66(2,900)
30	2651-3301	73,66(2,900)	76,20(3,000)

