

CRIMP TERMINAL SOCKET



2574 SERIES. 2.50mm(0.098").For Male Terminal

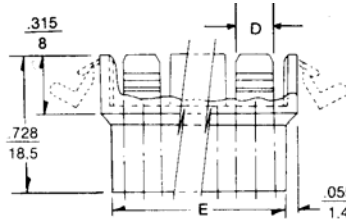
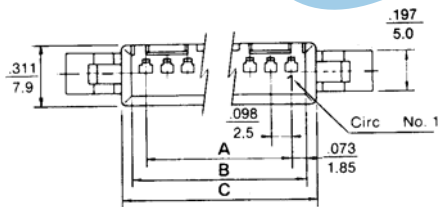
Features

- Available in 2 through 12 circuits
- Material : Nylon 6/6 UL94V-0
- With or without mounting ears
- Accepts 2573 series crimp terminal
- Mates with 2570 series housings
- Wire to wire and panel application

Dimensional Information

Ordering and Dimensional Information

Circuit Size	Part Number		Dimensions					
	With ears	Without ears	A	B	C	D	E	F
2	2574 - 2021	2574 - 2022	2.50(0.098)	6.20(0.244)	8.60(0.338)	2.50(0.098)	5.80(0.228)	12.40(0.488)
3	2574 - 2031	2574 - 2032	5.00(0.197)	8.70(0.342)	11.10(0.437)	5.00(0.197)	8.30(0.327)	14.90(0.587)
4	2574 - 2041	2574 - 2042	7.50(0.295)	11.20(0.440)	13.60(0.535)	7.50(0.295)	10.80(0.425)	17.40(0.685)
5	2574 - 2051	2574 - 2052	10.00(0.393)	13.70(0.539)	16.10(0.633)	3.70(0.145)	13.30(0.524)	19.90(0.783)
6	2574 - 2061	2574 - 2062	12.50(0.492)	16.20(0.637)	18.60(0.732)	5.00(0.197)	15.80(0.622)	22.40(0.882)
7	2574 - 2071	2574 - 2072	15.00(0.591)	18.70(0.763)	21.10(0.830)	5.00(0.197)	18.30(0.720)	24.90(0.980)
8	2574 - 2081	2574 - 2082	17.50(0.689)	21.20(0.834)	23.60(0.929)	5.00(0.197)	20.80(0.819)	27.40(1.079)
9	2574 - 2091	2574 - 2092	20.00(0.787)	23.70(0.933)	26.10(1.027)	5.00(0.197)	23.30(0.917)	29.90(1.177)
10	2574 - 2101	2574 - 2102	22.50(0.886)	26.20(1.031)	28.60(1.125)	5.00(0.197)	25.80(1.016)	32.40(1.276)
11	2574 - 2111	2574 - 2112	25.00(0.984)	28.70(1.130)	31.10(1.224)	5.00(0.197)	28.30(1.114)	34.90(1.374)
12	2574 - 2121	2574 - 2122	27.50(1.083)	31.20(1.228)	33.60(1.323)	5.00(0.197)	30.80(1.213)	37.40(1.472)



RECOMMENDED HOLE PATTERN

